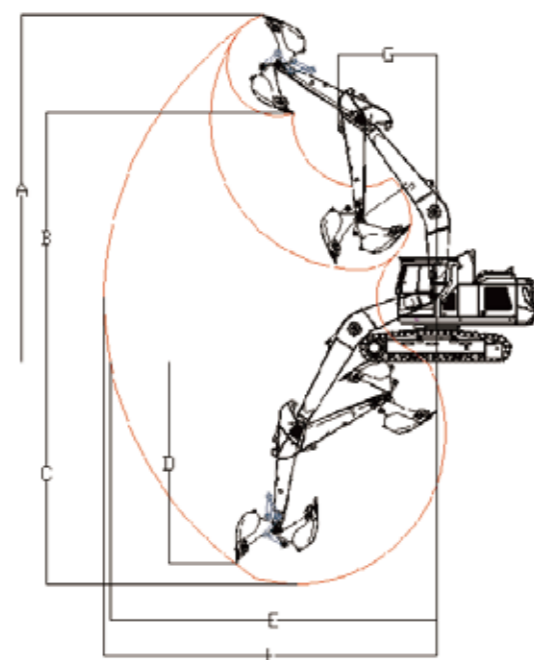
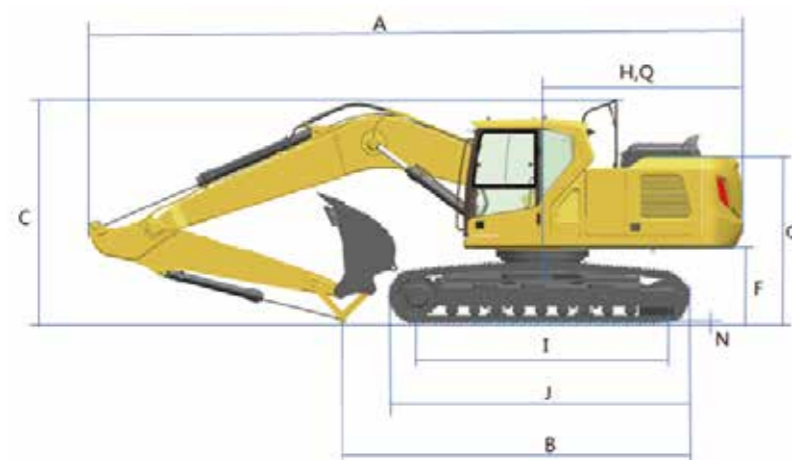
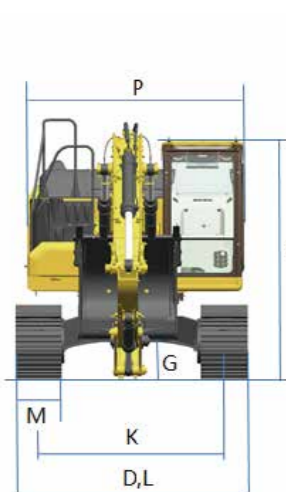


03 Product Specification



A	Total Length, mm	9680
B	Shipping Ground Length, mm	5070
C	Boom Height, mm	3322
D	Shipping Width, mm	2800
E	Cab Height, mm	3046
F	Ground Clearance of Counter Weight, mm	1106
G	Min. Ground Clearance, mm	466
H	Rear-end Swing Radius, mm	2980
I	Ground Contact Length of Crawler, mm	3360

J	Track Length, mm	4030
K	Track Gauge, mm	2200
L	Undercarriage Width, mm	2800
M	Std. track Shoe Width, mm	600
N	Track Teeth Height, mm	26
O	Hood Height, mm	2466
P	Rotary Platform Width, mm	2740
Q	Distance From Rotation Center To Rear End, mm	2970



A	Max. Cutting Height, mm	9915
B	Max. Dumping Height, mm	7140
C	Max. Digging Depth, mm	6630
D	Max. Vertical Excavating Depth, mm	6175
E	Max. Excavating Radius at Floor Level, mm	9660
F	Max. Excavating Radius, mm	9845
G	Min. Swing Radius, mm	3255

WE AIM AT CUSTOMERS' SATISFACTION

Lovol Heavy Industry, a wholly state-owned subsidiary under Weichai Holding Group, was established in 2004. It currently possesses "three manufacturing bases and two innovation centers".

Lovol Heavy Industry's business is one of the six core business segments of Weichai Group. Its products cover four main categories including excavators, loaders, off-highway mining trucks, and backhoe loaders. The R&D, production, and sales center of excavators, loaders, and backhoe loaders is located in Qingdao, covering an area of over 900 acres. The R&D and production center of off-highway mining trucks is located in Yangzhou, Jiangsu, covering an area of over 300 acres. Lovol Heavy Industry has gradually developed into a global leader in intelligent construction solutions by providing customers with intelligent products, equipment interconnection, intelligent construction, new energy products, and scenario solutions.



Official Website



Facebook

LOVOL HEAVY INDUSTRY GROUP CO.,LTD.

Address: No.75, Huanghe East Road, Huangdao District, Qingdao City, Shandong Province, China.

Website: en.wlovol.com

Z20250326-4

Information of Lovol Heavy Industry Agents

© As manufacturer, LOVOL has right to constantly upgrade and improve our products without informing to customers.
 © The pictures in literatures are for reference only, the detailed specifications are subject to real products.

LOVOL



Engine Model:
WEICHAI WP6G

Rated Power:
129kW/2000rpm

Total Machine
Weight: 21200kg

Standard Bucket Capacity:
1.25m³

FR215F

EXCAVATOR

Technical specifications and designs are subject to change without notice and additional equipment may be installed on the supplied machines.

01 Product Introduction

LOVOL

Golden Hydraulic Power Assembly

WEICHAI WP6G engine + Linde main pump + Linde main valve - the WEICHAI powertrain achieves optimal matching.



WEICHAI WP6G Engine

Low engine speed with high torque, resulting in high operational efficiency. The fuel tank has been upgraded to a PXE plastic fuel tank, which is manufactured using an integrated rotational molding process. It has a large capacity, robust structure, high reliability, and high cleanliness.



Large Displacement Main Pump

8.3%

Compared to Competitors, the Main Pump Displacement is Increased.

21°

Adopting the plunger pack slipper and 21° swash plate technology, the structure is compact and the power density is high.



Linde Main Valve

Exclusively customized tuning, optimized oil pathways, low pressure loss, and responsive performance.

Reinforced Machine Body Efficient And Reliable

Large Capacity Earthmoving Special Bucket

- The bucket capacity can reach up to 1.1 cubic meters for an earthmover bucket, offering high efficiency with its large capacity.
- Wear-resistant plates are added to the side and bottom of the bucket to enhance its wear resistance.



Large Cross-section Structure Design For Boom And Stick

- The boom features a large cross-section, three-piece structural design; the front and rear shaft seats are widened; the middle and rear shaft seats are made of forgings and tempered for enhanced reliability and durability of the boom.
- The dipper arm is designed with a large cross-section structure, with the front and rear shaft seats made of fan-shaped and hoe-shaped forgings. The T-shaped bushing of the front shaft seat of the dipper arm is replaced with a straight bushing, resulting in higher performance of the dipper arm and preventing bushing from shifting outwards.

Sturdy And Durable Chassis Structure

- The main beam has been reinforced with transverse plates, changing from a T-beam to an I-beam, enhancing strength and reliability.
- A brand-new undercarriage welding structure has been adopted, improving reliability and stability by 10% compared to the previous generation.

02 Product Introduction

WE AIM AT CUSTOMERS' SATISFACTION

Generation F Cabin

The newly developed Generation F cabin features a novel appearance and an overall layout that complies with ergonomic principles, enhancing visual experience, offering more storage space, and providing greater comfort for the operator.



Interior

The cab complies with ROPS regulations, ensuring safer operation. Featuring a panoramic sunroof that breaks conventional construction machinery concepts, delivering broader visibility.

First-Class Working Space

The newly developed Lovol intelligent operating system can achieve power system management, intelligent task interaction, automatic working condition recognition, auxiliary operations, and personalized customization functions. Intelligent components such as a 10.1-inch touch screen display and one-key start switch.

Easier Maintenance

The fuel pipe connection has been changed to a quick-connect fitting for easier installation and maintenance. The filter uses Weichai's three-stage nanny filter, which is simple to install and convenient to maintain.

03 Product Specification



Main Parameters

Operating Weight, kg	21200
Travel Speed, km/h	5.2/3.0
Swing Speed, r/min	11.5
Boom Length, mm	5700
Arm Length, mm	2925
Bucket Breakout Force, kN	148
Arm Crowd Force, kN	106
Max. Tracking Force, kN	231
Grade Ability, %	70
Ground Pressure, kPa	47.6

Power Module

Engine	
Manufacturer	WEICHAI
Model	WP6G
Emissions	Stage III
Cylinder Number	6
Intake Form	Turbocharged
Emissions, L	6.75
Max. Torque, N · m/rpm	680/1300-1500
Rated Speed, rpm	2000
Rated Power, kW	129
Engine Oil	
Oil Capacity, L	20
Fuel Tank	
Capacity, L	420

Platform Module

Form	Side-mounted With Tail
------	------------------------

Hydraulic Module

Main Pump	
Manufacturer	LINDE
Model	HPR125D
Max. Flow, L/min	439.4
Main Pump Type	Variable Displacement Piston Pump 2 + Gear Pump
Main Valve	
Manufacturer	LINDE
Model	OCV25
Number	1
Main Valve Type	Hydraulic Control
Max. Allowable Flow Rate, L/min	300*2
Rotary Motor	
Manufacturer	HENGLI
Model	HM5X130CHB
Number	1
Overflow Pressure, Mpa	29.6
Walking Motor	
Manufacturer	LK
Model	JXD165XCA
Number	2
Overflow Pressure, Mpa	40
Main Safety Valve Pressure, Mpa	34.3
Hydraulic Tank	
Capacity, L	206
Chassis Module	
Form	Fixed track, X-frame
Track	
Track Width, mm	600
Track Section Number (each side)	46
Supporting Wheels	
Number of Supporting Wheels On One Side	8

