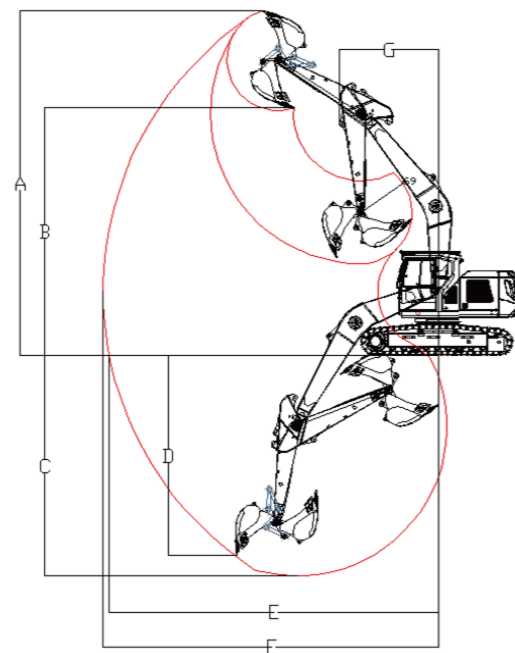
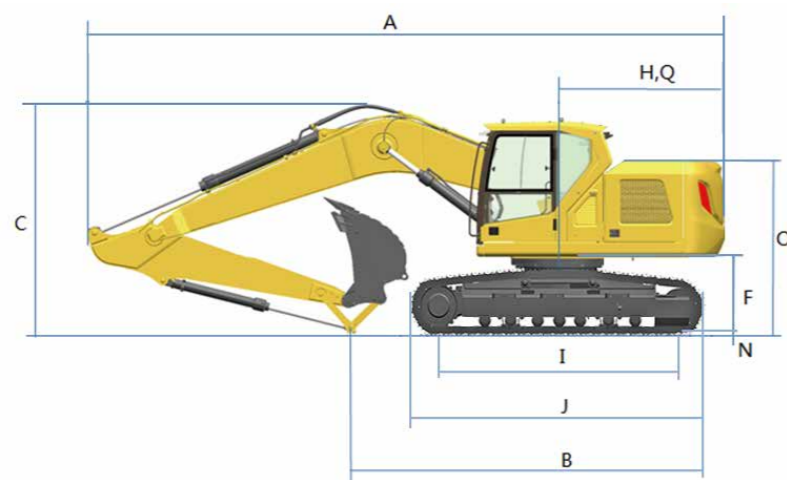
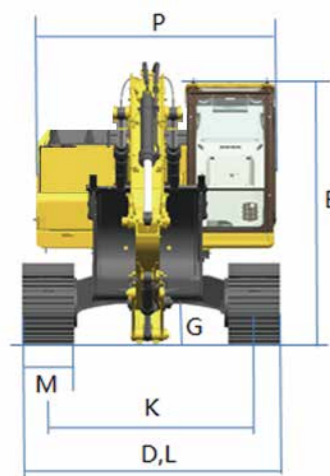


03 Product Specification



A	Total Length, mm	7740
B	Shipping Ground Length, mm	4395
C	Boom Height, mm	2850
D	Shipping Width, mm	2500
E	Cab Height, mm	2850
F	Ground Clearance of Counter Weight, mm	875
G	Min. Ground Clearance, mm	420
H	Rear-end Swing Radius, mm	2300
I	Ground Connect Length of Crawler, mm	2880

J	Track Length, mm	3615
K	Track Gauge, mm	2000
L	Undercarriage Width, mm	2500
M	Std. track Shoe Width, mm	500
N	Track Teeth Height, mm	25
O	Hood Height, mm	2275
P	Rotary Platform Width, mm	2490
Q	Distance From Rotation Center To Rear End, mm	2300



A	Max. Digging Height, mm	8500
B	Max. Dumping Height, mm	6140
C	Max. Digging Depth, mm	5425
D	Max. Vertical Excavating Depth, mm	4985
E	Max. Excavating Radius at Floor Level, mm	8135
F	Max. Excavating Radius, mm	8260
G	Min. Swing Radius, mm	2415

WE AIM AT CUSTOMERS' SATISFACTION

Lovol Heavy Industry, a wholly state-owned subsidiary under Weichai Holding Group, was established in 2004. It currently possesses "three manufacturing bases and two innovation centers".

Lovol Heavy Industry's business is one of the six core business segments of Weichai Group. Its products cover four main categories including excavators, loaders, off-highway mining trucks, and backhoe loaders. The R&D, production, and sales center of excavators, loaders, and backhoe loaders is located in Qingdao, covering an area of over 900 acres. The R&D and production center of off-highway mining trucks is located in Yangzhou, Jiangsu, covering an area of over 300 acres. Lovol Heavy Industry has gradually developed into a global leader in intelligent construction solutions by providing customers with intelligent products, equipment interconnection, intelligent construction, new energy products, and scenario solutions.



Official Website



Facebook

LOVOL HEAVY INDUSTRY GROUP CO.,LTD.

Address: No.75, Huanghe East Road, Huangdao District, Qingdao City, Shandong Province, China.

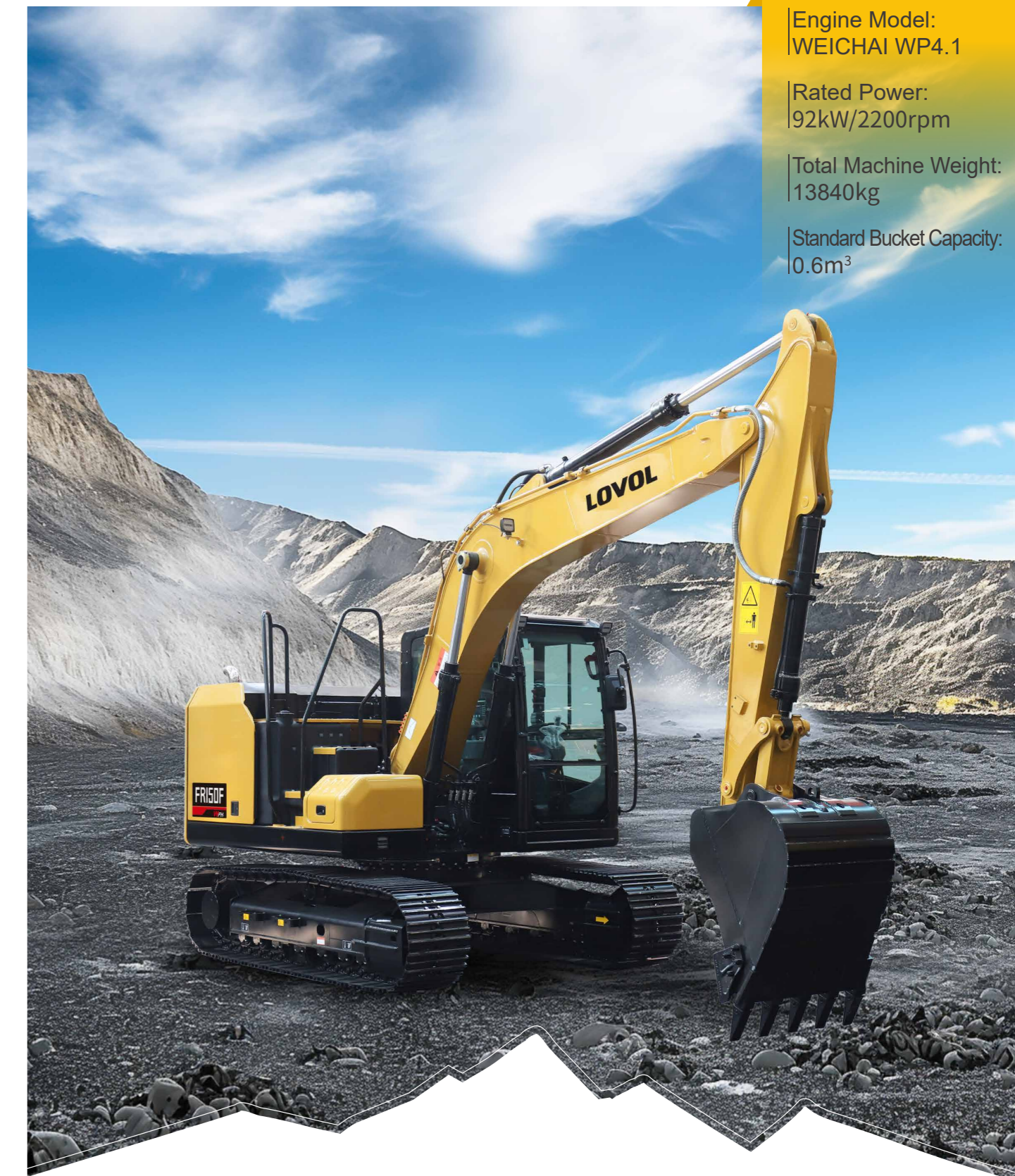
Website: en.wlovol.com

Z20250228-1

Information of Lovol Heavy Industry Agents

© As manufacturer, LOVOL has right to constantly upgrade and improve our products without informing to customers.
 © The pictures in literatures are for reference only, the detailed specifications are subject to real products.

LOVOL



Engine Model:
WEICHAI WP4.1

Rated Power:
92kW/2200rpm

Total Machine Weight:
13840kg

Standard Bucket Capacity:
0.6m³

FR150F

EXCAVATOR

Technical specifications and designs are subject to change without notice and additional equipment may be installed on the supplied machines.

01 Product Introduction

LOVOL

Golden Hydraulic Power Assembly

WEICHAI WP4.1 engine + Linde main pump + Linde main valve - the WEICHAI powertrain achieves optimal matching.



WEICHAI WP4.1 Engine

Low engine speed with high torque, resulting in high operational efficiency.

The fuel tank has been upgraded to a PXE plastic fuel tank, which is manufactured using an integrated rotational molding process. It has a large capacity, robust structure, high reliability, and high cleanliness.



Large Displacement Main Pump

8.3%

Compared to Competitors, the Main Pump Displacement is Increased.

21°

Adopting the plunger pack slipper and 21° swash plate technology, the structure is compact and the power density is high.



Linde Main Valve

Exclusively customized tuning, optimized oil pathways, low pressure loss, and responsive performance.

Reinforced Machine Body Efficient And Reliable

Large Capacity Earthmoving Special Bucket

- Standard equipment includes a 0.6 cubic meter earthmover bucket, offering high efficiency with its large capacity.
- Wear-resistant plates are added to the side and bottom of the bucket to enhance its wear resistance.



02 Product Introduction

WE AIM AT CUSTOMERS' SATISFACTION

Generation F Cabin

The newly developed Generation F cabin features a novel appearance and an overall layout that complies with ergonomic principles, enhancing visual experience, offering more storage space, and providing greater comfort for the operator.



Interior

The cab complies with ROPS regulations, ensuring safer operation. Featuring a panoramic sunroof that breaks conventional construction machinery concepts, delivering broader visibility.

First-Class Working Space

The newly developed Lovol intelligent operating system can achieve power system management, intelligent task interaction, automatic working condition recognition, auxiliary operations, and personalized customization functions. Intelligent components such as a 10.1-inch touch screen display and one-key start switch.

Easier Maintenance

The fuel pipe connection has been changed to a quick-connect fitting for easier installation and maintenance. The dual oil dipstick solution allows checking the oil level in the main pump compartment without having to climb onto the vehicle.

Large Cross-section Structure Design For Boom And Stick

- The working device structure has been completely upgraded for a longer lifespan.
- The rear seat of the boom has been changed from casting to forging, with an increase in width to enhance overall strength and rigidity.
- The front fork of the boom has been changed from casting to a welded assembly, with an increase in height to improve overall strength and rigidity.
- The T-shaped bushing of the front shaft seat of the dipper arm has been changed to a straight bushing, which can effectively prevent bushing from shifting outwards.
- The dipper arm has been changed from a U-shaped plate to a welded structure, enhancing overall strength and rigidity.

Sturdy And Durable Chassis Structure

- The main beam has been reinforced with transverse plates, changing from a T-beam to an I-beam, enhancing strength and reliability.
- A brand-new undercarriage welding structure has been adopted, improving reliability and stability by 10% compared to the previous generation.

03 Product Specification



Main Parameters

Operating Weight, kg	13840
Walking Speed(Max/Min), km/h	5.4/3.2
Rotation Speed, r/min	10.5
Boom Length, mm	4600
Arm Length, mm	2500
Bucket Digging Force, kN	101
Arm Digging Force, kN	75
Maximum Traction Force, kN	108.7
Climbing Ability,°	70
Ground Pressure Ratio, kPa	43.5

Power Module

Engine	
Manufacturer	WEICHAI
Model	WP4.1
Cylinder Number	4
Intake Form	Turbocharged
Emissions, L	4.088
Max. Torque, N·m/rpm	480/1600-1800
Rated Speed, rpm	2200
Rated Power, kW	92
Engine Oil	
Oil Capacity, L	11.9
Fuel Tank	
Capacity, L	240

Platform Module

Form	Side-mounted With Tail
------	------------------------

Hydraulic Module

Main Pump	
Manufacturer	LINDE
Model	HPR80D
Max. Flow, L/min	246.2
Main Pump Type	Variable Displacement Piston Pump 2 + Gear Pump
Main Valve	
Manufacturer	LINDE
Model	OCV22
Number	1
Main Valve Type	Hydraulic Control
Max. Allowable Flow Rate, L/min	130*2
Rotary Motor	
Manufacturer	HENGLI
Model	HM5X8011265
Number	1
Overflow Pressure, Mpa	26.5
Walking Motor	
Manufacturer	LONKING
Model	JXD077XXA
Number	2
Overflow Pressure, Mpa	36
Main Safety Valve Pressure, Mpa	
	35
Hydraulic Tank	
Capacity, L	165
Chassis Module	
Form	Fixed track, X-frame
Track	
Track Width, mm	500
Track Section Number (each side)	43
Supporting Wheels	
Number of Supporting Wheels On One Side	7

