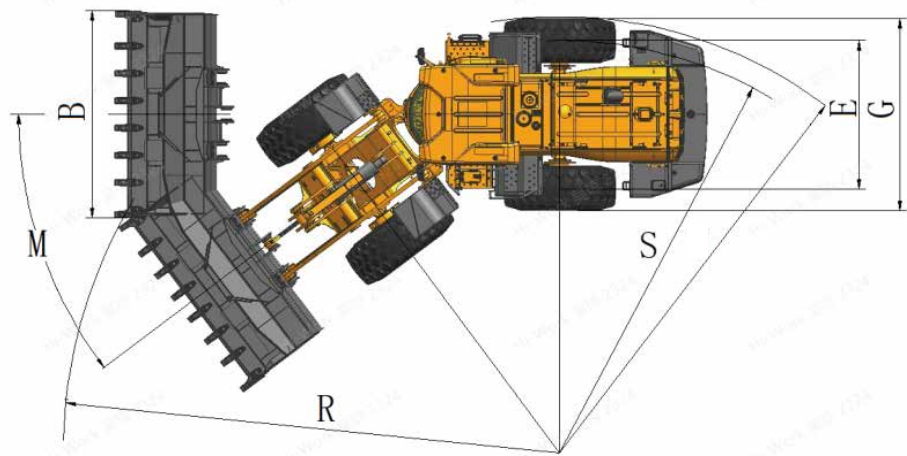
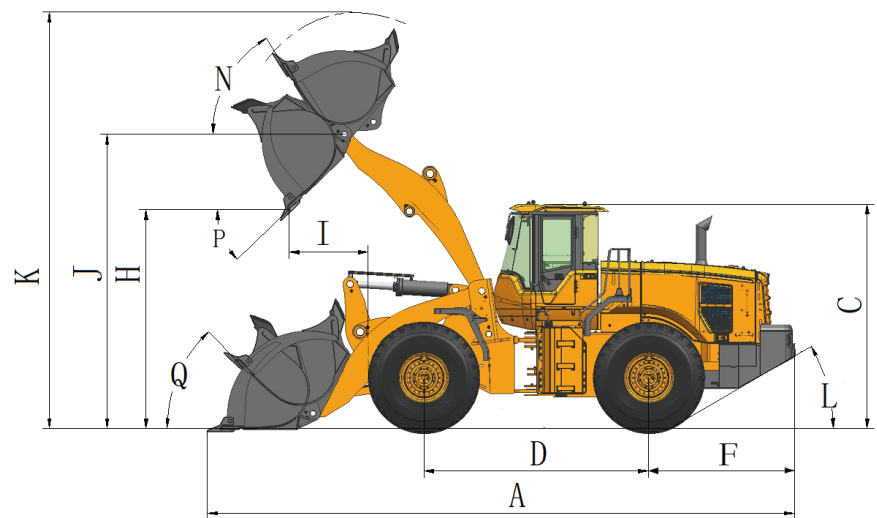


# 03 Product Specification



|   |                      |      |   |   |      |
|---|----------------------|------|---|---|------|
| A | Overall Length, mm   | 8440 | J | Maximum Hitch Height, mm                  | 4190 |
| B | Overall Width, mm    | 2980 | K | Maximum Lifting Height, mm                | 5640 |
| C | Overall Height, mm   | 3420 | L | Angle of Departure, °                     | 30   |
| D | Wheelbase, mm        | 3250 | M | Steering Angle, °                         | 37   |
| E | Track Width, mm      | 2150 | P | Angle of Discharge, °                     | 44   |
| F | Rear Overhang, mm    | 2300 | Q | Transport Angle, °                        | 49   |
| G | Tire Width, mm       | 595  | R | Turning Radius (Outer Side of Bucket), mm | 6980 |
| H | Dumping Height, mm   | 3140 | S | Turning Radius (Center of Tire), mm       | 5920 |
| I | Dumping Distance, mm | 1090 |   |   |      |



## WE AIM AT CUSTOMERS' SATISFACTION

Lovol Heavy Industry, a wholly state-owned subsidiary under WEICHAI Holding Group, was established in 2004. It currently possesses "three manufacturing bases and two innovation centers".

Lovol Heavy Industry's business is one of the six core business segments of WEICHAI Group. Its products cover four main categories including excavators, loaders, off-highway mining trucks, and backhoe loaders. The R&D, production, and sales center of excavators, loaders, and backhoe loaders is located in Qingdao, covering an area of over 900 acres. The R&D and production center of off-highway mining trucks is located in Yangzhou, Jiangsu, covering an area of over 300 acres. Lovol Heavy Industry has gradually developed into a global leader in intelligent construction solutions by providing customers with intelligent products, equipment interconnection, intelligent construction, new energy products, and scenario solutions.



Official Website



Facebook

### LOVOL HEAVY INDUSTRY GROUP CO.,LTD.

Address:No.75,Huanghe East Road,Huangdao District,Qingdao City, Shandong Province,China.

Website:en.wlovol.com

Z20250709-2

Information of Lovol Heavy Industry Agents

© As manufacturer, LOVOL has right to constantly upgrade and improve our products without informing to customers.  
© The pictures in literatures are for reference only, the detailed specifications are subject to real products.

# LOVOL



Engine:  
WEICHAI WD10G220E23

Rated Power:  
162kW/2000rpm

Total Machine Weight:  
17390kg

Standard Bucket Capacity:  
2.8m<sup>3</sup>

# FL955K

## LOADER

Technical specifications and designs are subject to change without notice and additional equipment may be installed on the supplied machines.



# 01

## Product Introduction

LOVOL

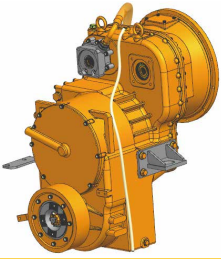
**Core Configuration** Weichai WD10G Tier II Engine + Power shift planetary transmission + Coaxial flow amplification steering system, Dual-pump confluence, Pilot control.



Power System

Weichai National II WD10G engine, with high torque, strong power, and high tractive force.

Customize and develop an exclusive performance curve and a dedicated fuel map, enabling a more perfect coordination between the engine and the transmission system. This can enhance economy and responsiveness, and reduce fuel consumption.

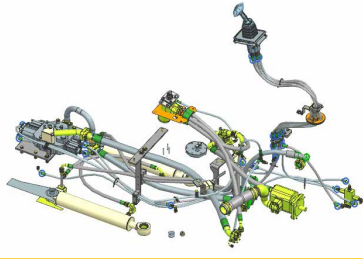


Transmission System

The power-shift planetary transmission, equipped with an enhanced overrunning clutch, offers more reliable performance.

Reinforced Dry-Type Axle with high-load-capacity housing, enlarged gear module, thickened cross shaft, and enhanced reliability.

The front drive shaft features independent support and end-face gear coupling, while the rear drive shaft utilizes wing-type flange connections, offering high load capacity and superior reliability.



Steering Hydraulic System

The coaxial flow-amplification steering system ensures minimal steering force and easy handling.

Dual-pump convergence ensures reliability and efficiency; pilot control delivers excellent fine maneuverability.

The 24-degree cone plus "O"-ring sealing technology provides better pipeline sealing.

## Reinforced Machine Body Efficient And Reliable

### Front and Rear Frame

- The front and rear frames are centrally articulated, optimized through finite element analysis, resulting in high rigidity, impact resistance, and reliability.
- Lovol patented hybrid articulated structure, with strong load-bearing capacity.
- After CAE structural and strength analysis, and validated through millions of cycles of impact fatigue testing, ensuring high reliability.
- K-generation counterweight structure with integrated rear combination lamps, delivering enhanced aesthetics and safety.



## 02

### K-series Cab

Spacious, excellent visibility, superior sealing, and high strength.



#### First-Class Working Space

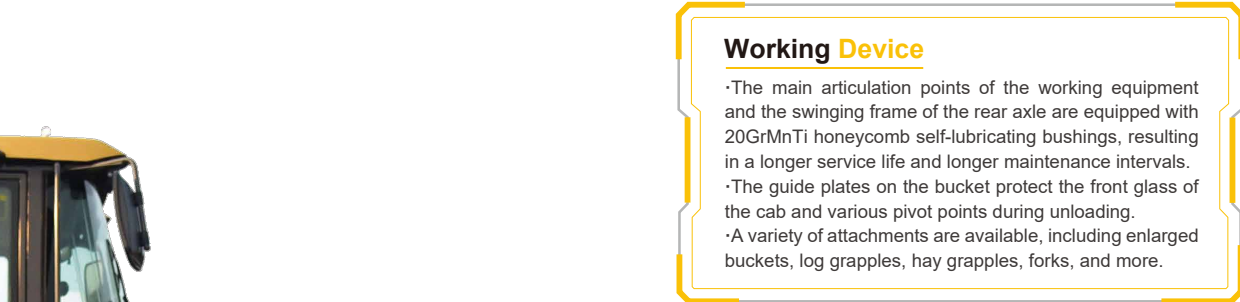
The front windshield features dual-curvature, large-opening laminated glass for enhanced safety; The seat features standard air suspension, dual-slide rail adjustment, and 135° reclining angle for enhanced driving comfort;

#### Easier Maintenance

Three-sided large-opening flip-up design for side covers and rear windshield significantly improves machine maintainability.

#### Working Device

- The main articulation points of the working equipment and the swinging frame of the rear axle are equipped with 20GrMnTi honeycomb self-lubricating bushings, resulting in a longer service life and longer maintenance intervals.
- The guide plates on the bucket protect the front glass of the cab and various pivot points during unloading.
- A variety of attachments are available, including enlarged buckets, log grapples, hay grapples, forks, and more.



# 02

## Product Introduction

WE AIM AT  
CUSTOMERS'  
SATISFACTION

# 03

## Product Specification

FL955K

| Overall Machine Parameters   |       |
|------------------------------|-------|
| Rated Load Capacity, kg      | 5200  |
| Curb Weight, kg              | 17390 |
| Max. Traction Force, kN      | 160   |
| Max. Digging Force, kN       | 160   |
| Standard Bucket Capacity, m³ | 2.8   |

| Engine                  |                     |
|-------------------------|---------------------|
| Model                   | WEICHAI WD10G220E23 |
| Emission Class          | Tier II             |
| Engine Suction          | Supercharge         |
| Number of Cylinder-Bore | 6-126×130           |
| Displacement, L         | 9.726               |
| Rated Power, kW         | 162                 |
| Rated Speed, rpm        | 2000                |
| Max. Torque, N·m        | 980                 |

| Gearbox                      |                                       |
|------------------------------|---------------------------------------|
| Type of Transmission         | Mechanical-shift planetary            |
| Type of Torque Converter     | Single-stage, two-phase, four-element |
| Torque Multiplication Factor | 4.0                                   |
| Number of Gears              | 2 forward/1 reverse                   |
| Max. Speed, km/h             | 42.0                                  |

| Bridge                             |   |
|------------------------------------|---|
| Type                               | Dry   |
| Front and Rear Axle Reduction Type | Single-stage reduction with spiral bevel gears<br>Wheel-side planetary gear reduction with straight cylindrical gears |

| Air Conditioning           |               |
|----------------------------|---------------|
| Working Medium (warm/cold) | Coolant/R134a |
| Cooling Capacity, kW       | 4.5           |

| Tires                    |           |
|--------------------------|-----------|
| Tire Specifications      | 23.5-25   |
| Tire Rating              | 16        |
| Front Tire Pressure, Mpa | 0.36-0.38 |
| Rear Tire Pressure, Mpa  | 0.33-0.35 |

| Working Hydraulics                 |  |
|------------------------------------|--|
| Control Mode                       | Pilot control                          |
| Working Hydraulic System Type      | Dual-pump flow combination             |
| System Operating Pressure, Mpa     | 18                                     |
| Working Pump Model                 | GP2100/02010-XFL02<br>CBGq2100/0010-YF |
| Displacement, ml/r                 | 100                                    |
| Multi-way valve model              | YGDF32                                 |
| Pilot Working Pressure, Mpa        | 3.5                                    |
| Boom Lifting Time, s               | 5.7                                    |
| Total Time for Three Operations, s | 10.6                                   |

| Brakeing            |                                |
|---------------------|--------------------------------|
| Service Braking     | Air-over-oil caliper disc type |
| Parking Braking     | Air braking                    |
| Brake Pressure, Mpa | 0.784                          |

| vehicle Body  |                |
|---|----------------|
| Overall Dimensions of The Cab (Length × Width × Height), mm | 1810×2090×1970 |

| Oil   |                       |
|---|-----------------------|
| Fuel Tank (geometric volume), L             | 280                   |
| Hydraulic Oil Tank (level gauge midline), L | 135                   |
| Engine Oil, L                               | 22                    |
| Transmission Oil, L                         | 36                    |
| Front and Rear Axle, L                      | 32 forward/26 reverse |
| Brake Pump, L                               | 4                     |
| Antifreeze, L                               | 51                    |

