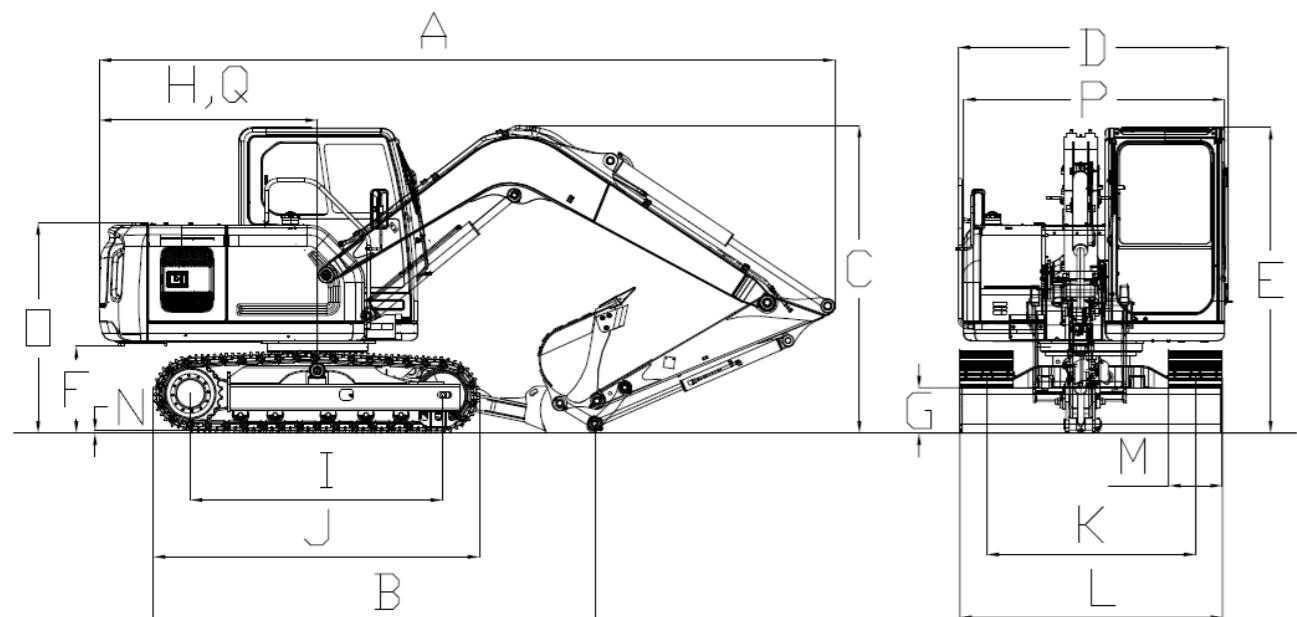


03 Product Specification

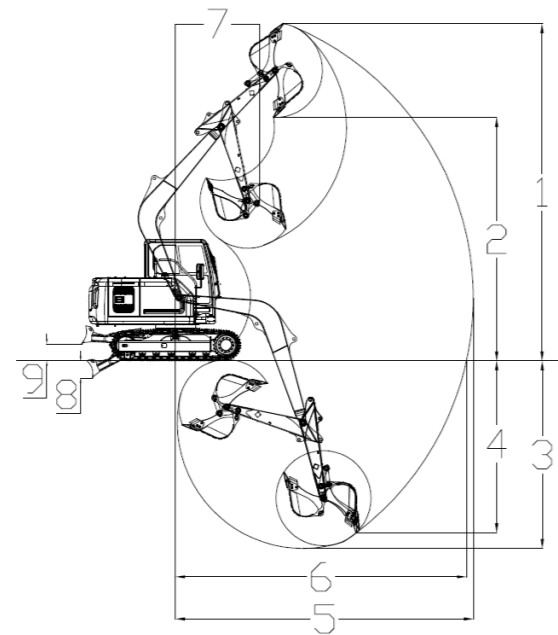


A	Total Length, mm	6170
B	Shipping Ground Length, mm	3710
C	Boom Height, mm	2480
D	Shipping Width, mm	2220
E	Cab Height, mm	2570
F	Ground Clearance of Counter Weight, mm	730
G	Min. Ground Clearance, mm	380
H	Rear-end Swing Radius, mm	1955

I	Ground Contact Length of Crawler, mm	2130
J	Track Length, mm	2735
K	Track Gauge, mm	1750
L	Undercarriage Width, mm	2200
M	Std. track Shoe Width, mm	450
N	Track Teeth Height, mm	20
O	Hood Height, mm	1765
P	Rotary Platform Width, mm	2190
Q	Distance From Rotation Center To Rear End, mm	1830



1	Max. Cutting Height, mm	7105
2	Max. Dumping Height, mm	5125
3	Max. Digging Depth, mm	3955
4	Max. Vertical Excavating Depth, mm	3620
5	Max. Excavating Radius, mm	6280
6	Max. Excavating Radius at Floor Level, mm	6135
7	Min. Swing Radius, mm	1770
8	Dozer blade lift height, mm	355
9	Dozer blade lowering depth, mm	365



WE AIM AT CUSTOMERS' SATISFACTION

Lovol Heavy Industry, a wholly state-owned subsidiary under WEICHAI Holding Group, was established in 2004. It currently possesses "three manufacturing bases and two innovation centers".

Lovol Heavy Industry's business is one of the six core business segments of WEICHAI Group. Its products cover four main categories including excavators, loaders, off-highway mining trucks, and backhoe loaders. The R&D, production, and sales center of excavators, loaders, and backhoe loaders is located in Qingdao, covering an area of over 900 acres. The R&D and production center of off-highway mining trucks is located in Yangzhou, Jiangsu, covering an area of over 300 acres. Lovol Heavy Industry has gradually developed into a global leader in intelligent construction solutions by providing customers with intelligent products, equipment interconnection, intelligent construction, new energy products, and scenario solutions.



Official Website



Facebook

LOVOL HEAVY INDUSTRY GROUP CO.,LTD.

Address: No.75, Huanghe East Road, Huangdao District, Qingdao City, Shandong Province, China.

Website: en.wlovol.com

Z20250611-1

Information of Lovol Heavy Industry Agents

© As manufacturer, LOVOL has right to constantly upgrade and improve our products without informing to customers.
 © The pictures in literatures are for reference only, the detailed specifications are subject to real products.

LOVOL



Engine:
WEICHAI WP3.2T

Rated Power:
36.8kW/2200rpm

Total Machine Weight:
7300kg

Standard Bucket Capacity:
0.3m³

FR80F

EXCAVATOR

Technical specifications and designs are subject to change without notice and additional equipment may be installed on the supplied machines.

01 Product Introduction

LOVOL

Golden Hydraulic Power Assembly

Weichai WP3.2T Engine + Hengli Main Pump & Main Valve, Weichai Swing and Travel Motors, Lovol-Calibrated Power-Hydraulic Matching Assembly.



Engine

Weichai WP3.2T Turbocharged, High-Pressure Common Rail Engine – Delivering High Torque at Low RPM, with Low Noise and Fuel Consumption.

The fuel tank has been upgraded to a PXE plastic fuel tank, which is manufactured using an integrated rotational molding process. It has a large capacity, robust structure, high reliability, and high cleanliness.



Main Pump

Hengli High-Displacement + Electro-Hydraulic Main Pump – Delivering Greater Flow, Faster Response, and Higher Operational Efficiency.

The main pump maintains optimal speed while keeping fuel consumption in the most economical range, effectively reducing overall fuel usage.



Main Valve

The Hengli main valve, specially calibrated and matched by Lovol, features optimized oil passages for reduced pressure loss and superior adaptability to working conditions.

Reinforced Machine Body Efficient And Reliable

Optimized Working Mechanism Structure

- The upper ear plates of the boom are raised, and the stick cylinder is hidden inside, reducing the risk of cylinder scraping; internal ribs are added to the boom to improve overall strength and rigidity;
- The T-shaped bushing of the stick front axle seat is changed to a straight bushing, which can effectively prevent the bushing from moving outward;
- The bucket shape is optimized, and wear-resistant plates are added to the outer side of the bucket, significantly improving wear resistance and durability.



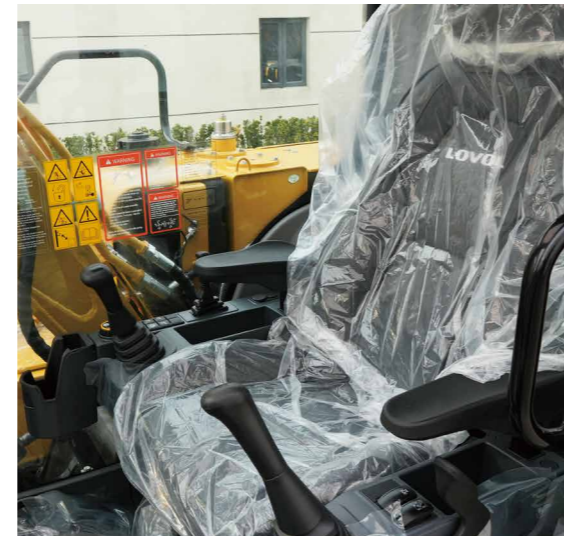
Sturdy And Durable Chassis Structure

- The newly designed X-frame features an increased gauge, delivering higher stability and reliability;
- The bulldozer blade is widened to increase the bulldozing area, making the vehicle more stable when supported.

02 Product Introduction

WE AIM AT CUSTOMERS' SATISFACTION

Generation F Cabin



Interior

Brand-new cab with all-new interior, delivering exquisite texture in every detail; High-end floating seat and new-structured armrest box, more ergonomic for enhanced comfort; Bulldozer blade handle integrated into the electrical box of the right armrest box for more convenient operation; Intelligent and reliable air conditioner with more humanized air outlet design, ensuring better cooling performance; Standard anti-ultraviolet glass, enlarged right-side glass and skylight, improving driving comfort and broadening the view;

First-Class Working Space

One-key start with integrated throttle knob; On-board PAD with 7-inch touch display; Intelligent multimedia, smart TBOX, and intelligent quick buttons create a first-class working space.

Easier Maintenance

Components such as diesel filters, oil filters, and pilot filters can be maintained while standing on the ground; The engine ECU and fuse box are arranged at the small side door of the cab for more convenient maintenance; The working device bushings are switched to honeycomb-type bushings, which have high oil storage capacity and good wear resistance, extending the maintenance cycle.

03 Product Specification



Main Parameters

Operating Weight, kg	7300
Travel Speed, km/h	4.9/2.6
Swing Speed, r/min	12.2
Boom Length, mm	3710
Arm Length, mm	1650
Bucket Breakout Force, kN	56
Arm Crowd Force, kN	38
Max. Tracking Force, kN	63.1
Grade Ability 35, %	70
Ground Pressure, kPa	33.9

Power Module

Engine	
Manufacturer	WEICHAI
Model	WP3.2T
Number of Cylinders	4
Aspirating Method	Turbocharged Intercooler
Displacement, L	3.17
Max. Torque, N·m/rpm	240/1200-1400
Rated Power, kW/rpm	36.8/2200
Engine Oil	
Oil Capacity, L	10.6
Fuel Tank	
Capacity, L	150

Platform Module

Type	Side-mounted With Tail
------	------------------------

Hydraulic Module

Main Pump	
Brand	HENGLI
Model	HP3V80
Max. Flow, L/min	133.4
Main Pump Type	Variable plunger pump
Main Valve	
Brand	HENGLI
Model	HVSE-18-08
Maximum Flow, L/min	180
Swin Motor	
Brand	WEICHAI
Model	GS04H
Overflow Pressure, Mpa	20
Travel Motor	
Brand	WEICHAI
Model	GR10H
Overflow Pressure, Mpa	28
Main Safety Valve Pressure, Mpa	
Hydraulic Oil Tank	
Capacity, L	100

Chassis Module

Type	Fixed track, X-frame
Track	
Track Shoe Width, mm	450
Track Roller	
Quantity (one side)	5

