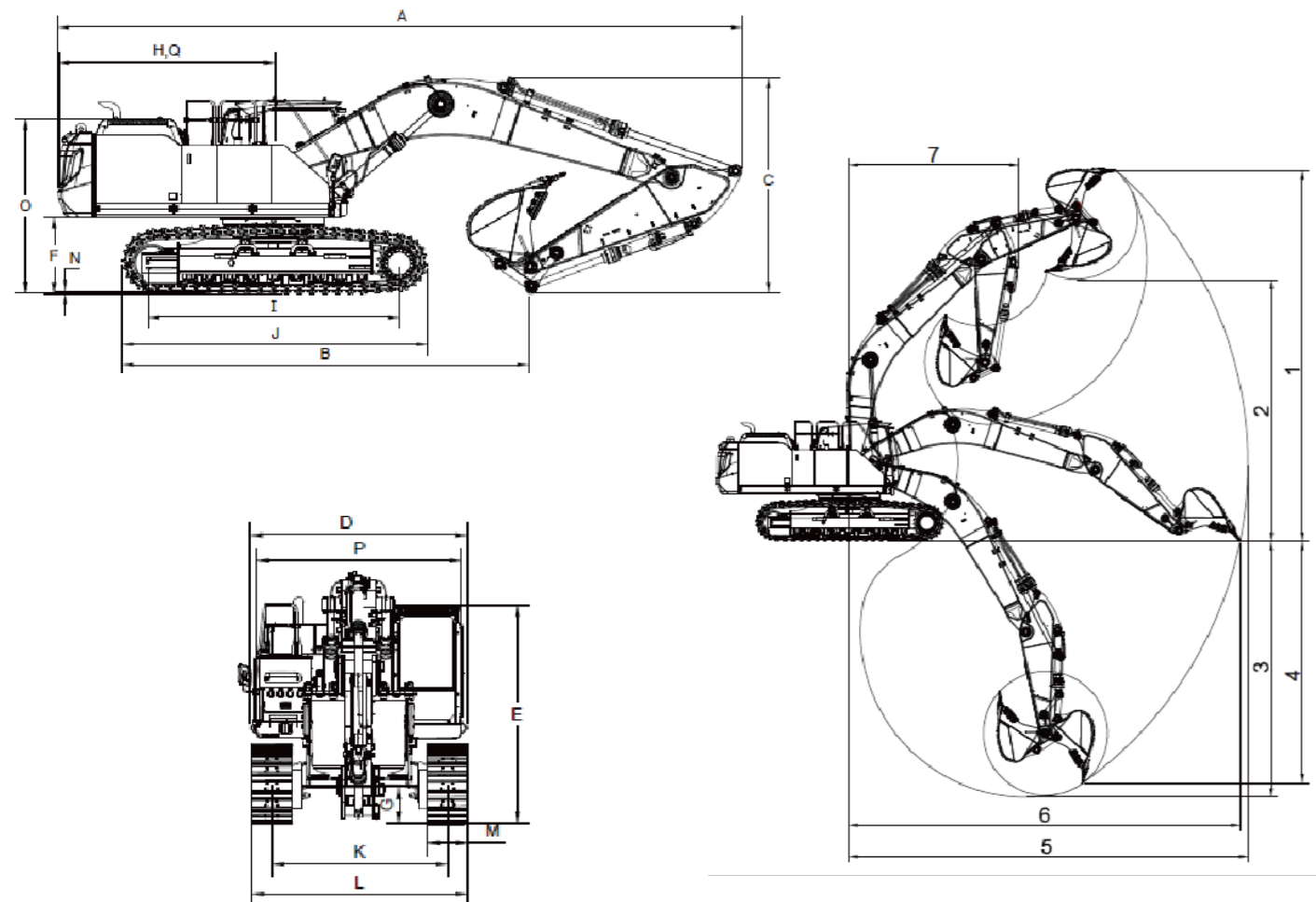


03 Product Specification



A	Transport Length, mm	10873	1	Max. Cutting Height, mm	10291
L	Transport Width, mm	3190	2	Max. Dumping Height, mm	7101
C	Transport Height, mm	3517	3	Max. Digging Depth, mm	6827
D	Width of The Main Body, mm	3025	4	Max. Vertical Excavating Depth, mm	5517
H	Rear-end Swing Radius, mm	3433	5	Max. Excavating Radius, mm	10721
G	Min. Ground Clearance, mm	510	6	Max. Excavating Radius at Floor Level, mm	10533
F	Ground Clearance of Counter Weight, mm	1160	7	Min. Turning Radius of Working Device, mm	4173
I	Wheel Base, mm	3812			
K	Track Gauge, mm	2590			
E	Cab Height, mm	3100			



WE AIM AT CUSTOMERS' SATISFACTION

Lovol Heavy Industry, a wholly state-owned subsidiary under WEICHAI Holding Group, was established in 2004. It currently possesses "three manufacturing bases and two innovation centers".

Lovol Heavy Industry's business is one of the six core business segments of WEICHAI Group. Its products cover four main categories including excavators, loaders, off-highway mining trucks, and backhoe loaders. The R&D, production, and sales center of excavators, loaders, and backhoe loaders is located in Qingdao, covering an area of over 900 acres. The R&D and production center of off-highway mining trucks is located in Yangzhou, Jiangsu, covering an area of over 300 acres. Lovol Heavy Industry has gradually developed into a global leader in intelligent construction solutions by providing customers with intelligent products, equipment interconnection, intelligent construction, new energy products, and scenario solutions.



Official Website



Facebook

LOVOL HEAVY INDUSTRY GROUP CO.,LTD.

Address: No.75, Huanghe East Road, Huangdao District, Qingdao City, Shandong Province, China.

Website: en.wlovol.com

Z20250411-1

Information of Lovol Heavy Industry Agents

© As manufacturer, LOVOL has right to constantly upgrade and improve our products without informing to customers.
 © The pictures in literatures are for reference only, the detailed specifications are subject to real products.

LOVOL



Engine:
WEICHAI WP8H

Rated Power:
228kW/2000rpm

Total Machine Weight:
31300kg

Standard Bucket Capacity:
1.7m³

FR315F

EXCAVATOR

Technical specifications and designs are subject to change without notice and additional equipment may be installed on the supplied machines.

01 Product Introduction

LOVOL

Golden Hydraulic Power Assembly

Weichai WP8H engine + Linde main pump + Linde main valve - the Weichai power-train achieves optimal matching.



Weichai WP8H Engine

Low engine speed with high torque, high operational efficiency.

Standard equipment includes electronically controlled silicone oil fans and lightweight PE material fuel tanks for high efficiency and energy saving.



Large Displacement Main Pump

8.3%

Compared to Competitors, the Main Pump Displacement is increased.

21°

Adopting the plunger pack slipper and 21° swash plate technology, the structure is compact and the power density is high.



Linde Main Valve

Exclusively customized tuning, optimized oil passage, minimal pressure loss, and responsive performance.

Reinforced Machine Body, Efficient And Reliable.

Sturdy And Durable Chassis Structure

- The chassis uses a split-type mining-specific chassis, with 40-ton class four wheels and one track.
- The heat treatment process of track roller and crawlers has been upgraded, and the wear resistance has been improved by 50%.

Reinforced Rotating Platform

- The rotating platform uses a heavy-duty structure, reducing stress by more than 40%.
- Platform structure upgraded, with increased spacing between the main beam and arm, significantly enhancing load-bearing capacity.

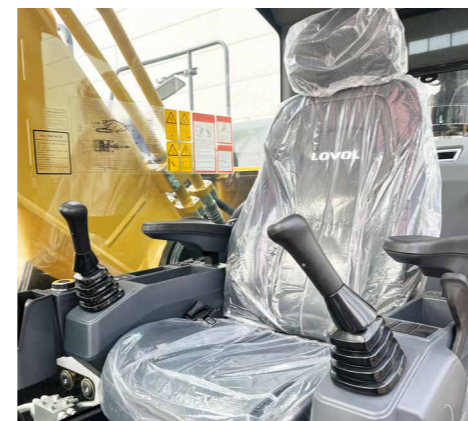


02 Product Introduction

WE AIM AT CUSTOMERS' SATISFACTION

Generation F Cabin

The newly developed Generation F cabin features a novel appearance and an overall layout that complies with ergonomic principles, enhancing visual experience, offering more storage space, and providing greater comfort for the operator.



Interior

New interior, ductwork, and air outlet design, increased storage space; seat improvements and upgrades for higher comfort.

First-Class Working Space

The newly developed Lovol intelligent operating system can achieve power system management, intelligent task interaction, automatic working condition recognition, auxiliary operations, and personalized customization functions.

Intelligent components such as a 10.1-inch touch screen display and one-key start switch.

Easier Maintenance

The integrated fuel filter and oil filter, with all filters located together for convenient maintenance. The dual oil dipstick solution allows checking the oil level in the main pump compartment without having to climb onto the vehicle.

Large Cross-section Structure Design For Boom And Stick

- The work device structure has been completely upgraded, with a lifespan of over 15,000 hours.
- Optimize the hinge point of the boom and optimize the lock-up of the cylinder; Adopt large cross-section three-section structure design, the internal rib plate of the transition middle section with variable cross-section at the tail; Whole annealing treatment, stress 58%.
- Optimize the hinge point of the bucket rod to increase excavation force and optimize cylinder locking.
- Adopting a large cross-section structural design, with widened front and rear axle housings, thickened side plates, and increased cross-sectional area to enhance overall strength and rigidity.

Large Capacity Earthmoving Special Bucket

- 1.7m³ rock bucket for heavy duty work.
- Adopting a large-capacity earthmoving-specific bucket with an optimized shape, the cutting resistance is reduced, and wear resistance is increased by 25%.
- The ear plate has a larger opening, which is more resistant to tearing and more reliable.

03 Product Specification



Main Parameters	
Operating Weight, kg	31300
Travel Speed, km/h	3.1/5.1
Swing Speed, r/min	9.8
Boom Length, mm	6200
Arm Length, mm	2900
Bucket Breakout Force, kN	213
Arm Crowd Force, kN	171
Max. Tracking Force, kN	269
Grade Ability 35, %	35
Ground Pressure, kPa	61.6

Power Module	
Engine	
Manufacturer	WEICHAI
Model	WP8H
Number of Cylinders	6
Aspirating method	Turbocharged Intercooler
Displacement, L	8.2
Max. Torque, N·m/rpm	1310/1300-1600
Rated Speed, rpm	2000
Rated Power, kW	228
Engine Oil	
Oil Capacity, L	26
Fuel Tank	
Capacity, L	505

Platform Module	
Type	Side-mounted With Tail

Hydraulic Module	
Main Pump	
Brand	Linde
Model	HPR180D
Max. Flow, L/min	2×273.6
Main Pump Type	Series-parallel Axial Piston Pump
Main Valve	
Brand	Linde
Model	OCV25
Quantity	1
Main Valve Type	Hydraulic Control
Maximum Flow, L/min	2×300
Swin Motor	
Brand	Linde
Model	HM180
Quantity	1
Overflow Pressure, Mpa	27
Travel Motor	
Brand	EDDIE
Model	FTM60A
Quantity	2
Overflow Pressure, Mpa	34.3
Main Safety Valve Pressure, Mpa	34.3
Hydraulic Oil Tank	
Capacity, L	316
Chassis Module	
Type	Fixed track, X-frame
Track	
Track Shoe Width, mm	600 Double-Rib Tracks
Track Section Quantity (section)	48
Track Roller	
Quantity (one side)	8

