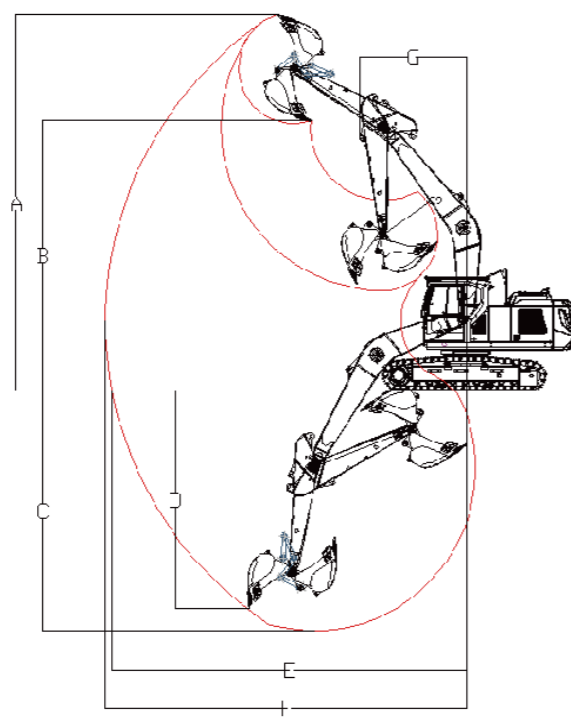
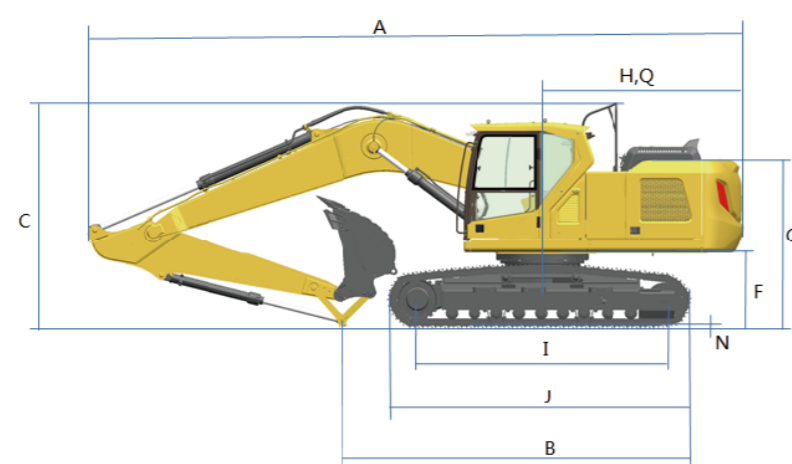
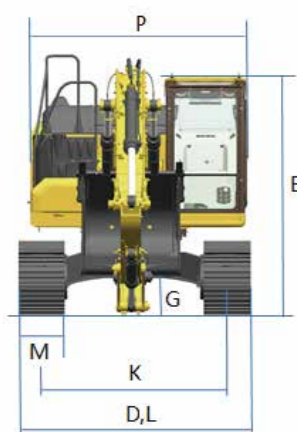


03 Product Specification



A	Total Length, mm	9760
B	Shipping Ground Length, mm	5070
C	Boom Height, mm	3322
D	Shipping Width, mm	2980
E	Cab Height, mm	3100
F	Ground Clearance of Counter Weight, mm	1087
G	Min. Ground Clearance, mm	462
H	Rear-end Swing Radius, mm	4120
I	Ground Contact Length of Crawler, mm	3640

J	Track Length, mm	4436
K	Track Gauge, mm	2380
L	Undercarriage Width, mm	2980
M	Std. track Shoe Width, mm	600
N	Track Teeth Height, mm	26
O	Hood Height, mm	2466
P	Rotary Platform Width, mm	2700
Q	Distance From Rotation Center To Rear End, mm	3050



A	Max. Cutting Height, mm	10190
B	Max. Dumping Height, mm	7260
C	Max. Digging Depth, mm	6510
D	Max. Vertical Excavating Depth, mm	5980
E	Max. Excavating Radius at Floor Level, mm	9660
F	Max. Excavating Radius, mm	9875
G	Min. Swing Radius, mm	2910

WE AIM AT CUSTOMERS' SATISFACTION

Lovol Heavy Industry, a wholly state-owned subsidiary under Weichai Holding Group, was established in 2004. It currently possesses "three manufacturing bases and two innovation centers".

Lovol Heavy Industry's business is one of the six core business segments of Weichai Group. Its products cover four main categories including excavators, loaders, off-highway mining trucks, and backhoe loaders. The R&D, production, and sales center of excavators, loaders, and backhoe loaders is located in Qingdao, covering an area of over 900 acres. The R&D and production center of off-highway mining trucks is located in Yangzhou, Jiangsu, covering an area of over 300 acres. Lovol Heavy Industry has gradually developed into a global leader in intelligent construction solutions by providing customers with intelligent products, equipment interconnection, intelligent construction, new energy products, and scenario solutions.



Official Website



Facebook

LOVOL HEAVY INDUSTRY GROUP CO.,LTD.

Address: No.75, Huanghe East Road, Huangdao District, Qingdao City, Shandong Province, China.

Website: en.wlovol.com

Z20250326-5

Information of Lovol Heavy Industry Agents

© As manufacturer, LOVOL has right to constantly upgrade and improve our products without informing to customers.
 © The pictures in literatures are for reference only, the detailed specifications are subject to real products.

LOVOL



Engine Model:
WEICHAI WP7H

Rated Power:
160kW/2000rpm

Total Machine Weight:
23700kg

Standard Bucket Capacity:
1.2m³

FR245F

EXCAVATOR

Technical specifications and designs are subject to change without notice and additional equipment may be installed on the supplied machines.

01 Product Introduction

LOVOL

Golden Hydraulic Power Assembly

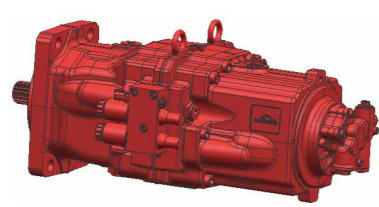
WEICHAI WP7H engine + Linde main pump + Linde main valve - the WEICHAI powertrain achieves optimal matching.



WEICHAI WP7H Engine

WEICHAI possesses the only National Key Laboratory for Internal Combustion Engine Reliability among internal combustion engine enterprises.

The fuel tank has been upgraded to a PXE plastic fuel tank, which is manufactured using an integrated rotational molding process. It has a large capacity, robust structure, high reliability, and high cleanliness.



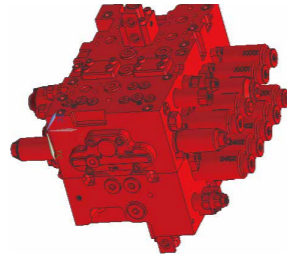
Large Displacement Main Pump

8.3%

Compared to Competitors, the Main Pump Displacement is Increased.

30%

The steel-encased steel counter-wrapping structure is adopted, which helps to reduce the coefficient of friction, decrease the area of friction, optimize the oil film structure, and enhance product efficiency and reliability. The responsiveness of the main pump is increased by 30%, and the overall efficiency of the main pump is improved by 3%.



Linde Main Valve

300000

The main valve body is made of vermicular graphite cast iron material, which has better shock absorption and thermal conductivity. Small shrinkage tendency to avoid spool jamming.

Withstood 3 million cycles of ultra-high pressure endurance testing without cracking, ensuring reliable quality.

Reinforced Machine Body Efficient And Reliable

Large Capacity Earthmoving Special Bucket

- Standard equipment includes a 1.2 cubic meter earthmover bucket.
- The large-capacity earthmoving bucket is specialized and optimized for less cutting resistance and a 25% increase in wear resistance.
- Key areas are made of high-strength plates and wear-resistant plates, with bucket teeth and seats made of wear-resistant materials to extend service life.



Large Cross-section Structure Design For Boom And Stick

- The boom features a large cross-section, three-piece structural design with a variable cross-section transition at the tail and internal stiffening plates added to the middle section.
- The front and rear shaft seats are widened, with the cross-section increased by 5%, enhancing overall strength and rigidity by 40%.
- The middle and rear shaft seats are made of forgings and tempered, making the structural performance more reliable and durable.
- The dipper arm is designed with a large cross-section structure, with the cross-section increased by 8%, enhancing overall strength and rigidity.
- The front and rear shaft seats are made of fan-shaped and hoe-shaped forgings, reducing stress values at welds by 50% to improve reliability.
- The T-shaped bushing of the front shaft seat of the dipper arm is replaced with a straight bushing, effectively preventing bushing from shifting outwards.

Sturdy And Durable Chassis Structure

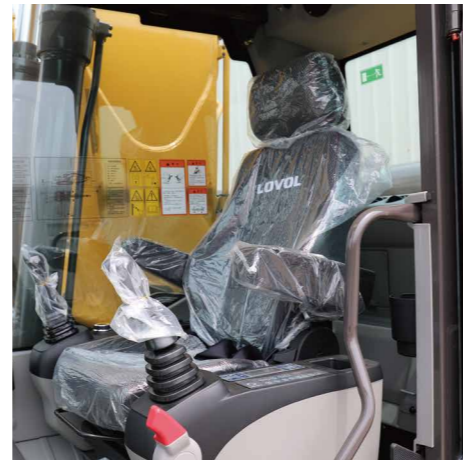
- The chassis uses "SHANTUI" four-wheel and track assembly.
- The heat treatment process of the idler wheels and tracks is upgraded, increasing wear resistance by 50%.

02 Product Introduction

WE AIM AT CUSTOMERS' SATISFACTION

Generation F Cabin

The newly developed Generation F cabin features a novel appearance and an overall layout that complies with ergonomic principles, enhancing visual experience, offering more storage space, and providing greater comfort for the operator.



Interior

The cab complies with ROPS regulations, ensuring safer operation. Brand new interior, redesigned air ducts and vents, increased storage space; seat improvements and upgrades for enhanced comfort.

First-Class Working Space

The air filter cover has been changed to a skid strip, and the bolts feature a countersunk design, making inspection and maintenance safer. Intelligent components such as an 8-inch LCD touch screen monitor and a one-touch start switch have been introduced.

Easier Maintenance

The fuel system is designed with a three-stage parallel integration, enhancing space utilization, reducing pipeline connections, and facilitating assembly, disassembly, and maintenance. The engine cover is adjusted to a three-piece design, with the middle section opening backward (at a 75-degree angle), ensuring access for the refrigerant charge of the compressor located at the rear of the engine. The built-in dust screen of the radiator has been removed, and dust screens are now placed on the side of the left cover and the left door for easy cleaning. The integrated air filter structure extends the comprehensive maintenance cycle by double compared to the traditional air filter (from 500 hours to 1000 hours).

03 Product Specification



Main Parameters

Operating Weight, kg	23700
Travel Speed, km/h	5.1/3.0
Swing Speed, r/min	9.3
Boom Length, mm	5700
Arm Length, mm	2925
Bucket Breakout Force, kN	148
Arm Crowd Force, kN	106
Max. Tracking Force, kN	228.1
Grade Ability 35, %	70
Ground Pressure, kPa	53.2

Power Module

Engine	
Manufacturer	WEICHAI
Model	WP7H
Number of Cylinders	6
Aspirating method	Turbocharged
Displacement,L	6.8
Max. Torque, N·m/rpm	1000/1300-1500
Rated Speed, rpm	2000
Rated Power, kW	160
Engine Oil	
Oil Capacity, L	25
Fuel tank	
Capacity,L	420

Platform Module

Form	Side-mounted With Tail
------	------------------------

Hydraulic Module

Main Pump	
Brand	LINDE
Model	HPR135D
Max. Flow, L/min	423.2
Main Pump Type	Variable Displacement Piston Pump 2 + Gear Pump
Main Valve	
Brand	LINDE
Model	OCV25
Quantity	1
Main Valve Type	Hydraulic Control
Maximum Flow, L/min	300*2
Swin Motor	
Brand	HENGLI
Model	HM5X130CHB
Quantity	1
Overflow Pressure, Mpa	29.6
Travel Motor	
Brand	LONKING
Model	JXD165XCA
Quantity	2
Overflow Pressure, Mpa	40
Main Safety Valve Pressure, Mpa	
	34.3
Hydraulic Oil Tank	
Capacity, L	206
Chassis Module	
Type	Fixed track, X-frame
Track	
Track Shoe Width, mm	600
Track Section Quantity (section)	49
Track Roller	
Quantity (one side)	9

