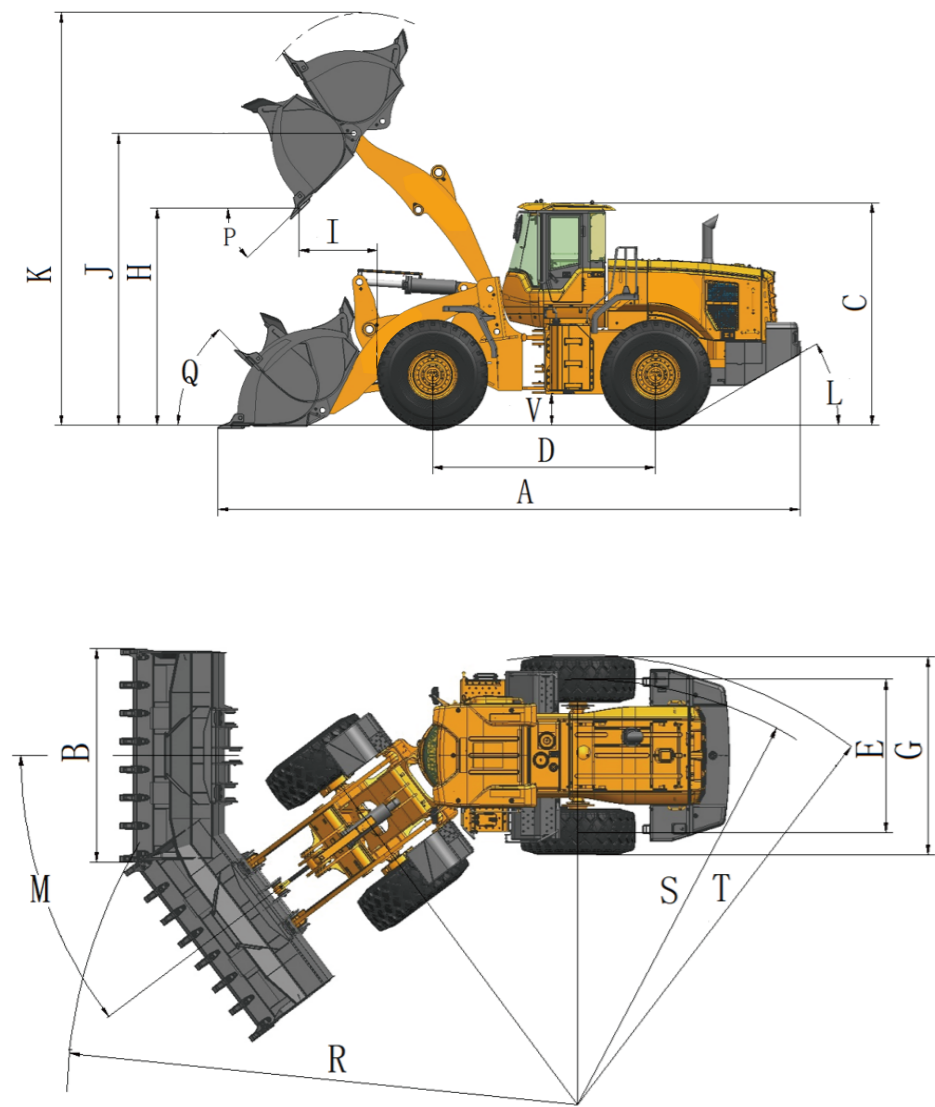


03 Product Specification



A	Overall Length, mm	8590	J	Maximum Hitch Height, mm	4190
B	Overall Width, mm	2980	K	Maximum Lifting Height, mm	5690
C	Overall Height, mm	3420	L	Angle of Departure, °	30
D	Wheelbase, mm	3350	M	Steering Angle, °	37
E	Track Width, mm	2150	P	Angle of Discharge, °	44
G	Tire Width, mm	2745	Q	Transport Angle, °	49
H	Dumping Height, mm	3100	R	Turning Radius (Outer Side of Bucket), mm	7140±50
I	Dumping Distance, mm	1130	S	Turning Radius (Center of Tire), mm	6070±50
V	Min. Ground Clearance, mm	440	T	Outer tire turning radius, mm	6460±50



WE AIM AT CUSTOMERS' SATISFACTION

Lovol Heavy Industry, a wholly state-owned subsidiary under Weichai Holding Group, was established in 2004. It currently possesses "three manufacturing bases and two innovation centers".

Lovol Heavy Industry's business is one of the six core business segments of Weichai Group. Its products cover four main categories including excavators, loaders, off-highway mining trucks, and backhoe loaders. The R&D, production, and sales center of excavators, loaders, and backhoe loaders is located in Qingdao, covering an area of over 900 acres. The R&D and production center of off-highway mining trucks is located in Yangzhou, Jiangsu, covering an area of over 300 acres. Lovol Heavy Industry has gradually developed into a global leader in intelligent construction solutions by providing customers with intelligent products, equipment interconnection, intelligent construction, new energy products, and scenario solutions.



Official Website



Facebook

LOVOL HEAVY INDUSTRY GROUP CO.,LTD.

Address: No.75, Huanghe East Road, Huangdao District, Qingdao City, Shandong Province, China.

Website: en.wlovol.com

Z20250326-1

Information of Lovol Heavy Industry Agents

© As manufacturer, LOVOL has right to constantly upgrade and improve our products without informing to customers.
 © The pictures in literatures are for reference only, the detailed specifications are subject to real products.

LOVOL



Engine Model:
WEICHAI WP10G220E341

Rated Power:
162kW/2200rpm

Total Machine Weight:
17980kg

Standard Bucket Capacity:
3.0m³

FL958K

LOADER

Technical specifications and designs are subject to change without notice and additional equipment may be installed on the supplied machines.

01 Product Introduction

LOVOL

Core Configuration WEICHAI WP10 Stage III engine + ZF fully automatic electronically controlled transmission + wet brake axle + constant-displacement and variable-displacement dual pump combined hydraulic system.



WEICHAI WP10H Stage III Engine

162kW

Air-to-air intercooled, with ample power and high tractive force.

Customize and develop an exclusive performance curve and a dedicated fuel map, enabling a more perfect coordination between the engine and the transmission system. This can enhance economy and responsiveness, and reduce fuel consumption.

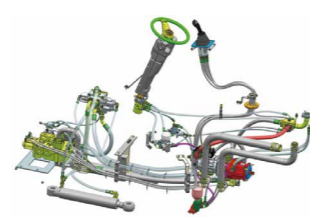


ZF BP210 Transmission

Fully automatic gear shifting, with the advantages of reliability, comfort, efficiency, safety, and strong adaptability.

Pilot single-lever operation with an FNR button for easy handling.

Loval enhanced 5-ton loader with dry axle, significantly improved reliability and durability, and longer lifespan.



The fixed-variable dual-pump confluence hydraulic system patented by Lovol

8-10%

Fuel-efficient and oil-saving

The steering column is adjustable in both forward and backward angles for a comfortable ride; the steering gear is equipped with multiple sound insulation features, resulting in lower noise levels inside the cab.

The cleanliness of the hydraulic system is enhanced, resulting in cleaner oil and effectively reducing the failure rate.

Reinforced Machine Body, Efficient And Reliable.

Working Device

·The main articulation points of the working equipment and the swinging frame of the rear axle are equipped with 20GrMnTi honeycomb self-lubricating bushings, resulting in a longer service life and longer maintenance intervals.
·The guide plates on the bucket protect the front glass of the cab and various pivot points during unloading.



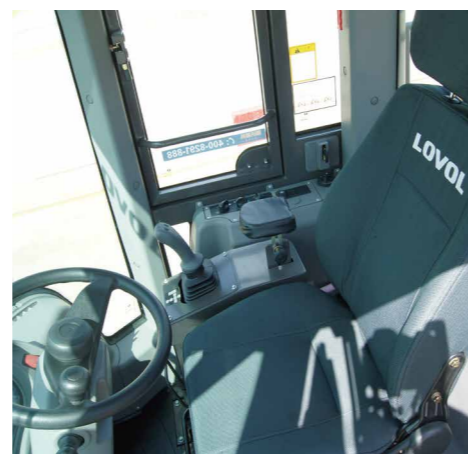
Front and Rear Frame

·The front and rear frames are centrally articulated with a large wheelbase. The front frame features a wide-straddle structure, which is more suitable for heavy loads.
·Loval patented hybrid articulated structure, with high load-carrying capacity and reliability.
·After CAE structural and strength analysis, and validated through millions of cycles of impact fatigue testing, ensuring high reliability.
·The K-series counterweight structure, with rear combination lights integrated into the counterweight, is more aesthetically pleasing and safer.

02 Product Introduction

WE AIM AT CUSTOMERS' SATISFACTION

Loval K-series cab



Interior

The Lovol K-series cab features a spacious interior, excellent visibility, good sealing performance, and high strength. The front glass is made of double-curved, large-opening laminated glass, which enhances safety. The cab is equipped with a standard air-suspension seat, which can be adjusted on double slides and reclined to a 135° angle, thereby improving the comfort of driving and riding.

Appearance

The large-opening, top-hinged design on three sides, including the side doors and rear window cover, enhances the maintainability of the machine.

03 Product Specification

FL958K

Overall Machine Parameters

Rated Load Capacity, kg	5500
Curb Weight, kg	17980
Max. Traction Force, kN	165
Max. Digging Force, kN	165
Standard Bucket Capacity, m ³	3.0

Engine

Model	WEICHAI WP10G220E341
Emission Class	Stage III
Engine Suction	Supercharge
Number of Cylinder-Bore	6-126×130
Displacement, L	9.726
Rated Power, kW	162
Rated Speed, rpm	2200
Max. Torque, N·m	950

Gearbox

Transmission Brand	ZF BP210
Type of Transmission	Electro-controlled shifting with a countershaft transmission
Type of Torque Converter	Single-stage single-phase three-component
Torque Multiplication Factor	2.8
Number of Gears	4 forward, 3 reverse
Max. Speed, km/h	38.0

Bridge

Type	Dry
Front and Rear Axle Reduction Type	Single-stage reduction with spiral bevel gears Wheel-side planetary gear reduction with straight cylindrical gears

Air Conditioning

Working Medium (warm/cold)	Coolant/R134a
Cooling Capacity, kW	4.5

Tires

Tire Specifications	23.5-25
Tire Rating	18 forward, 16 reverse
Front Tire Pressure, Mpa	0.38-0.4
Rear Tire Pressure, Mpa	0.33-0.35

Working Hydraulics

Control Mode	Pilot control
Working Hydraulic System Type	Constant Flow Merging
System Operating Pressure, Mpa	24
Working Pump Model	Jinan Hydraulic SGP2050R01 Huawei Hydraulic HGP2050C
Displacement, ml/r	50
Multi-way valve model	D32
Pilot Working Pressure, Mpa	3.5
Boom Lifting Time, s	5.7
Total Time for Three Operations, s	10.2

Brakeing

Service Braking	Air-over-oil caliper disc type
Parking Braking	Air braking
Brake Pressure, Mpa	0.784

Vehicle Body

Overall Dimensions of The Cab (Length × Width × Height), mm	1810×2090×1970
---	----------------

Oil

Fuel Tank (geometric volume), L	350
Hydraulic Oil Tank (level gauge midline), L	135
Engine Oil, L	20
Transmission Oil, L	36
Front and Rear Axle, L	32 forward/26 reverse
Brake pump, L	4
Antifreeze, L	51

