

TECHNICAL SPECIFICATIONS



Engine

Engine Model	CUMMINS QSB7
Number of Cylinders	6
Max. Torque/Speed	1080N·m/1500rpm
Displacement	7.79L



Hydraulic system

Max. Main Pump Flow	360L/min
Main Safety Valve Pressure	35MPa



Main Performance

Bucket Digging Force	210.8kN
Arm Digging Force	134kN
Max. Traction Force	288kN
Max. Walking Speed	5.2km/h
Min. Walking Speed	3.3km/h
Rotary Speed	10.3r/min
Gradeability	35°
Ground Pressure	69kPa



Oil Capacity

Fuel Tank	510L
Hydraulic Tank	440L
Engine Oil	25L



LOVOL CONSTRUCTION MACHINERY GROUP CO., LTD.

Address: No. 75, Huanghe East Road, Huangdao District, Qingdao City, Shandong Province, China.

Website: en.lovol.com

Alibaba: lovolconstruction.en.alibaba.com

Facebook: Cons Lovol

E-mail: lovol_overseas@global.lovol.com

TEL: +86-532-86907190

As manufacturer, LOVOL has right to constantly upgrade and improve our products without informing to customers. The pictures in literatures are for reference only, the detailed specifications are subject to real products.



Rated Power

169kW/2050rpm

Operating Weight

31300kg

Bucket Capacity

1.5m³

FR330E2-H

EXCAVATOR



RELIABILITY

Powerful Engine

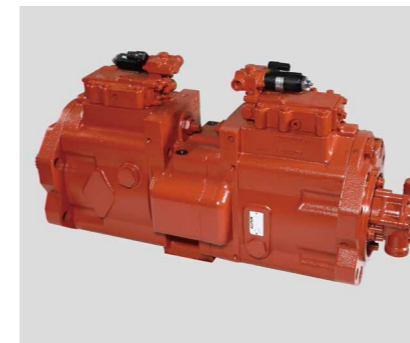
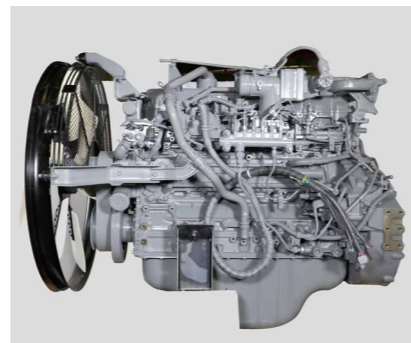
Cummins engine which is specially designed for mining applications, the rated power is 169KW. This engine meets the emission standard of US Tire3F and also EU Stage III A.

Electric Control Positive Flow System

During the design stage, LOVOL has utilized latest technologies to develop an integrated hydraulic system. The positive flow control system adjusts the displacement of pump and the motion of valve spool simultaneously, delivering optimal operating experience for the operator with smooth and responsive control.

Core Components

Relying on Japan Engineering Center, LOVOL has establishing solid partnership with world-renowned enterprises and improve the quality and service life of these components. The supply of the core components like engine, pump, valve, motor, cylinder and forth also can be priority guaranteed.



PRODUCTIVITY

Superb Match

Each component in powertrain system, such as engine, gear, rotary motor, working pumps and hydraulic cylinder are specially customized to achieve perfect match with one another, the whole system features are more reliable.

Outperformance

To carry out the mining applications, the machine equips with powerful engine combining with large flow hydraulic system, together with electric-positive flow hydraulic control system to make machine more suitable for tough projects.

Great Digging Force

On the premise of ensuring static digging force, LOVOL dedicate to research of dynamic digging force. The system will automatically detect the pressure when face big frustration during digging, and automatically adjusts output pressure to keep the powerful force in digging process.

ROBUSTNESS



Rigorous Test and Experiment

Machine test: LOVOL CL-6 machine testing yard covers more than 200,000 square meters, it can simulate various applications like earthmoving, aggregate, sand, quarry and forth. The test including strenghen vibration, noise, working efficiency, oil consumption, travel and climbing tests, etc. Every new model should go through more than 2,000 working hours strenghen combination test here.

Robust Chassis (Extensional)

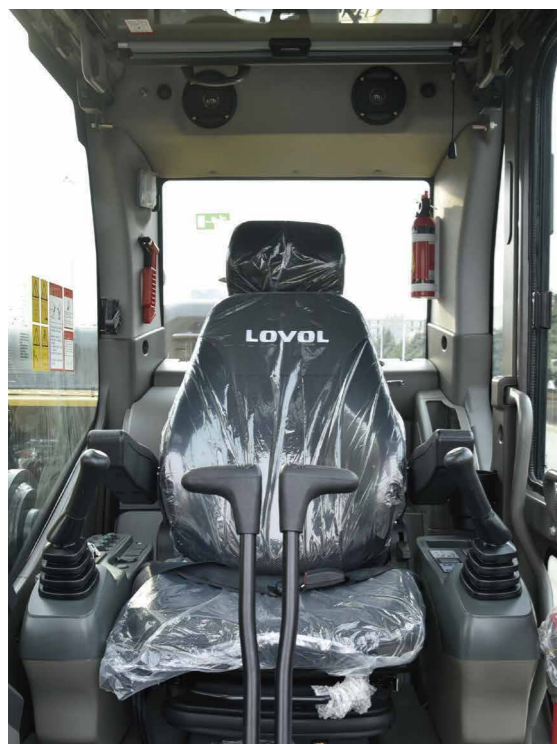
Improved heat treatment of Track Roller, Carrier Roller, Idler, Drive Roller and Track's surface, which makes each part more resistant to prolong the service life. The Track roller and Idler utilize anti-freeze grease and seals which can protect parts when working in the temperature of -40 C. Lifetime self-lubrication chain and reinforced track beam make the chassis more robust.

Reinforced Working Device

Adopts high-strength rock bucket teeth which is special suitable for the tough applications, the boom and arm are reinforced to prolong the service life. Self-lubrication shaft sleeve is used to make every linkage works smoothly with high durability.



COMFORT



Large Space Cab

Equipped with large cab which provides operator big space to operate machine. The premium suspension seat with armrests is very comfortable and it can reduce the working fatigue dramatically. Front windshield can be partially or fully retracted to the cab roof. Rearview camera is optional to get better rear vision in order to improve operation safety in jobsite.

Ergonomic Design

The proportional joystick delivers sensitivity, accuracy and smoothness in operation. This joystick is specially designed to meet different operating conditions. Intelligent control system is standard which could control diverse attachments such as bucket, hammer, scarifier and hydraulic scissors.

Low Noise and Low Vibration

In order to reduce work fatigue and improve productivity, the noise inside of cab has been controlled to the lowest level. The cab is attached to the frame with buffer that dampens vibrations and sound levels to enhance operator comfort.

INCREASE YOUR PRODUCTIVITY AND PROFIT WITH LOVOL ATTACHMNTS

You can easily expand the performance of your machine by utilizing any of the variety of LOVOL Attachments. Each LOVOL Attachments is designed to fit the weight and horsepower of LOVOL Excavator for improved performance, safety, and stability.



Quick Coupler



Hydraulic Shear



Hydraulic Hammer



Standard Bucket



STANDARD CONFIGURATION

Engine

- Turbocharged, 6-cylinders, water-cooling, electronic injection
- Radiator with protective fence
- Air Pre-filter
- Air intake heater
- Fan guard
- Double filters, dry air filter
- Engine oil pan with oil drain valve
- Automatic idle speed system

Cab

- Cigarette lighter
- Seat belt
- Shade plate
- Storage compartment
- Emergency hammer
- Air conditioner
- Audio speaker
- Shock absorber
- Flexible aerial
- Radio
- Hydraulic safety locking rod
- Sun proof safety glass

Hydraulic System

- Automatic hydraulic system (flow confluence system)
- Multistage filtration system
- Anti-sway valve
- Boom and stick locking valve
- Cylinder buffer device
- Anti-slope turning device
- Waste oil drainage pipeline
- Pilot buffer valve (rotary, stick, boom)

- Cab floor mat
- Pull-up front window
- Dismountable lower windshield
- Sun shade window
- Windshield wiper
- Skylight window
- Suspended seat
- Big storage area

Electronic Control System

- 24V power battery
- Monitor brightness adjustment
- Maintenance tips
- Safe stop & start function
- Master switch
- Engine start protection
- Multilingual display
- Cab ceiling light
- Diagnostic interface
- Emergency stop switch
- Automatic diagnosis system
- Automatic idle speed system
- One-touch pressure enhancement
- Anti-theft system

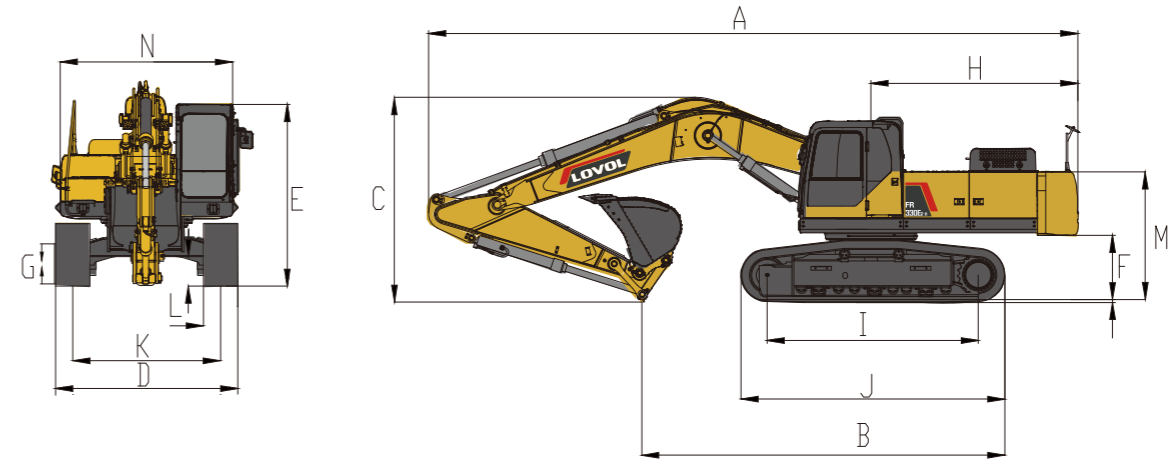
Swing Platform

- Toolbox
- Large pedal
- Large handrail
- Bottom guard plate
- Anti-crash beams
- Anti-skid plates
- Handrails
- Tool box
- Spare parts box

Chassis

- Fixed chassis
- 600mm triple tooth track plate

TECHNICAL SPECIFICATIONS

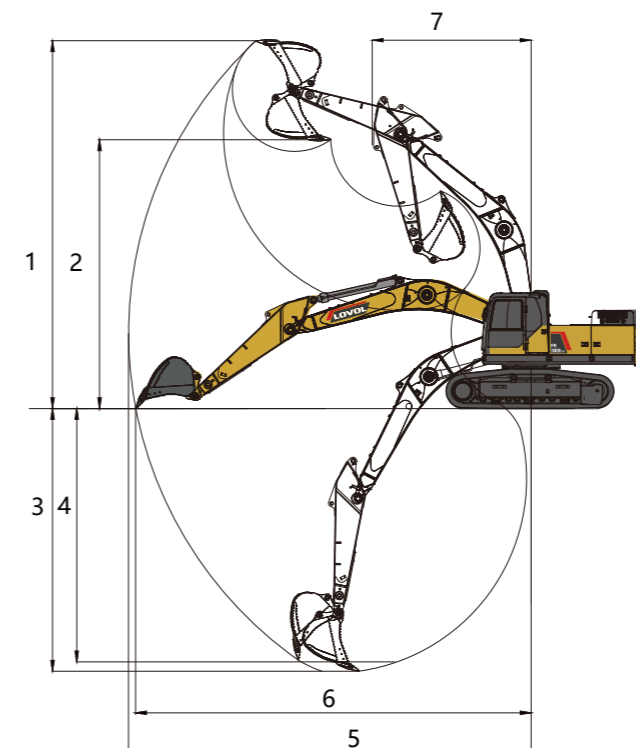


Working Range

Max. Digging Height	1	10067mm
Max. Dumping Height	2	6990mm
Max. Digging Depth	3	7200mm
Max. Vertical Digging Depth	4	6017mm
Max. Digging Radius	5	10693mm
Max. Ground Digging Radius	6	10507mm
Min. Turning Radius	7	4186mm

Dimensions

Shipping Length	A	10504mm
Shipping Ground Length	B	5672mm
Boom Height	C	32300mm
Shipping Width	D	3202mm
Cab Height	E	3110mm
Ground Clearance of Counter Weight	F	1104mm
Min. Ground Clearance	G	510mm
Tail Turning Radius	H	3200mm
Length to Center of Rollers	I	4015mm
Track Length	J	4865mm
Track Gauge	K	2590mm
Track Shoe Width	L	600mm
Hood Height	M	2223mm
Swing Platform Width	N	3199mm



Other Specifications

Boom Length	6150mm
Arm Length	3200mm
Track Section Number (each side)	48
Track Roller Number	9