

## TECHNICAL SPECIFICATIONS



### Engine

Engine Model	WEICHAI WP4.1
Rated Power	92kW/2200rpm
Max. Torque/Speed	500/1400-1600N·m/rpm
Displacement	4.08L



### Hydraulic system

Max. Main Pump Flow	352L/min
Main Safety Valve Pressure	35/38MPa



### Main Performance

Bucket Digging Force	91kN
Arm Digging Force	65kN
Max. Traction Force	112kN
Max. Walking Speed	5.4km/h
Min. Walking Speed	3km/h
Rotary Speed	10.5r/min
Gradeability	35°
Ground Pressure	31kPa



### Oil Capacity

Fuel Tank	240L
Hydraulic Tank	165L
Engine Oil	8.9L-11.9L



### LOVOL HEAVY INDUSTRY GROUP CO., LTD.

Address: No. 75, Huanghe East Road, Huangdao District, Qingdao City, Shandong Province, China.

Website: [en.lovol.com](http://en.lovol.com) E-mail: [lovol\\_overseas@global.lovol.com](mailto:lovol_overseas@global.lovol.com) TEL: +86-532-86907190 Facebook: Cons Lovol

As manufacturer, LOVOL has right to constantly upgrade and improve our products without informing to customers. The pictures in literatures are for reference only, the detailed specifications are subject to real products.



Rated Power  
Operating Weight  
Bucket Capacity

**92kW/2200rpm**  
**14110kg**  
**0.45m<sup>3</sup>**

**FR130F**  
EXCAVATOR



## INTELLIGENCE

The newly developed Levo intelligent operating system can realize power system management, intelligent interaction, automatic identification of working conditions, assistance, operation, personality customization and other functions.

### Intelligent control of the car

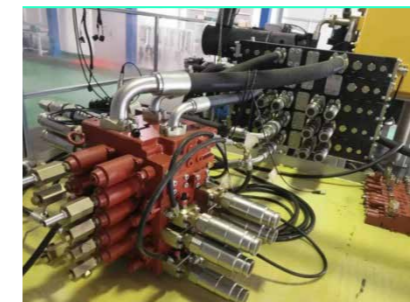
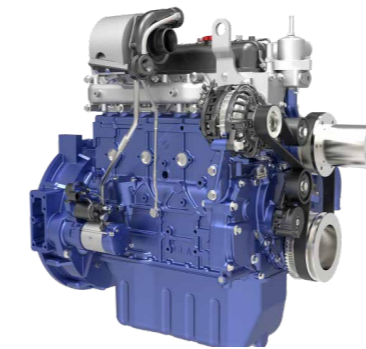
The driver uses the mobile phone to connect the car Bluetooth, you can remotely control the excavator up / down, start / turn off, turn on / off the air conditioner, turn on / off the lights, etc.

### Smart multimedia

The driver can answer the phone and play the music through the monitor.

### Intelligent safe box

The traditional fuse is replaced with electronic insurance devices, automatic protection, power off can be restored, there is no need to replace the fuse.



## RELIABILITY

With the engine, main pump, main valve and other components of the world's leading test bench, the whole machine multi-functional comprehensive verification test ground, virtual verification + entity verification, all-round verification ability industry first-class.

**5 years or 10000 hours-strong proof of reliable product quality.**

### High reliability

mature platform products, high reliability, B10 life of 10000h

### High dynamic responsiveness

The rated power of 92kW, and the maximum torque of 500N. And m, low speed torque 465N.m/1000r/min

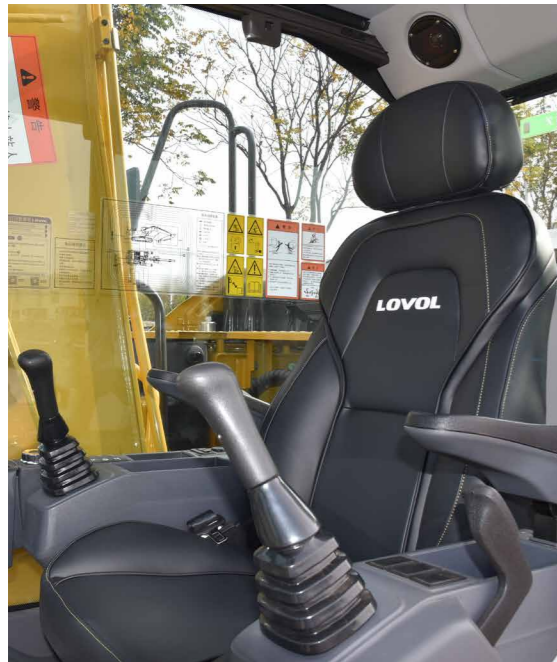
### Ultra-low energy consumption

Fuel consumption rate of 199g / kWh, low fuel consumption area cover excavator common working conditions

### Environmental adaptability

-25°C low temperature start, 4000m high altitude adaptation ability

## COMFORT



### Driving meets the ROPS regulatory requirements, and driving is safer.

Adopt new structure, extended to meet 50 tons of ROPS regulatory requirements, safer.

Panoramic skylight, break through the concept of conventional construction machinery.

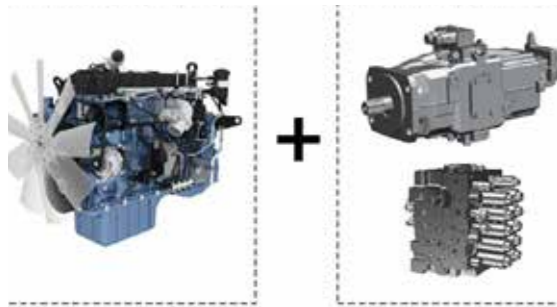
### All new air channel and air outlet design, storage space increased.

After CFD analysis, the air outlet position is optimized, with lower air resistance and lower noise.

More storage space, can accommodate the driver's daily trivial items, to provide a cleaner driving environment.

The new walking channel design is more convenient to get on and off the bus. Standard rear-view camera, improve driving safety.

## EFFICIENCY



W-LCOT adaptive control algorithm is adopted, the controller automatically identifies the condition category and dynamically adjusts the power matching.

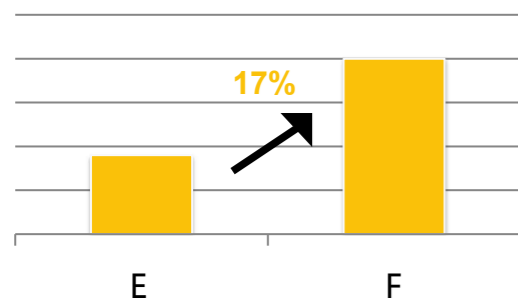
Using Weichai power technology, the operation efficiency of the whole machine is increased by 5% compared with the E generation, and the fuel efficiency is increased by more than 10%.

Matching the positive flow system, through the optimization of the spool opening, flow matching and the operation of the handle range, the F generation expands by 26% compared with the E generation, the operation dead area is increased by 30%, and the fine operation efficiency is significantly improved.

### Large displacement positive flow main pump

The displacement is 17% higher compared with E generation and competing products, and the electronically controlled main pump improves the system responsiveness and is more energy saving.

High power density, high pressure, and high control accuracy



## INCREASE YOUR PRODUCTIVITY AND PROFIT WITH LOVOL ATTACHMENTS

You can easily expand the performance of your machine by utilizing any of the variety of LOVOL Attachments. Each LOVOL Attachments is designed to fit the weight and horsepower of LOVOL Excavator for improved performance, safety, and stability.



## STANDARD CONFIGURATION

### Engine

- Turbocharged 4 stroke water-cooling direct injection type
- Complying with China Stage II emissions
- Automatic idle system
- Engine oil pan drain valve
- Radiator with protective net
- Double filter elements dry air filter element
- Air pre-filter
- Air intake heater
- Fan guard

### Hydraulic System

- Automatic hydraulic system (confluence system)
- Anti-swing valve
- Movable arm and bucket rod block valve
- Multi-stage filtration system
- Cylinder buffer device
- Auxiliary hydraulic valve
- Automatic two-speed travel motor
- Slope anti-rotation device
- Waste oil discharge pipeline

### Electronic Control System

- 24V power supply
- Diagnostic interface
- Emergency stop switch
- Display brightness adjustment
- Maintenance tips
- Automatic diagnostic system
- Automatic idle system
- One-touch pressure augmentation
- Safe stop / start function
- Main power switch
- Anti-theft system
- Engine starting protection
- Multilingual display
- Top light of cab

### Cab

- Ashtray
- Cigar lighter
- Seat belt
- Front sunshade
- Console box
- Escape hammer
- Thermostatically controlled air conditioner
- Audio device
- Shock absorber (silicone oil and rubber pad)
- Flexible antenna
- Radio (with interfaces of MP3 and USB)
- Hydraulic safety lock
- Sun-protection safety glass
- Floor mat
- Large storage area
- Pull-up front window
- Removable lower windshield
- Sunshade window
- Wipers
- Open skylight

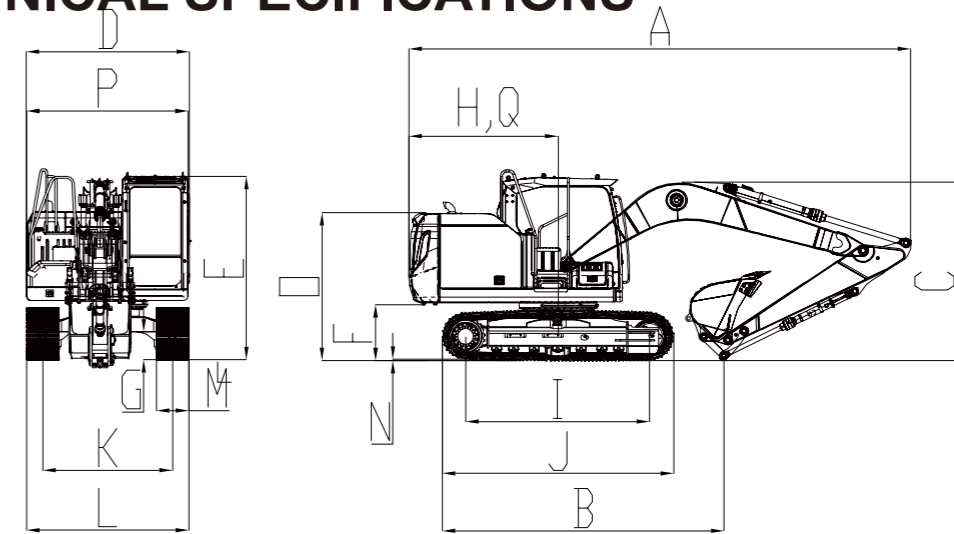
### Swing Platform

- Passage with railing
- Tool box
- Anti-skid plate
- Large pedal
- Large armrest
- Bottom protection plate

### Chassis

- Fixed chassis
- 500mm, three-tooth track shoe

## TECHNICAL SPECIFICATIONS

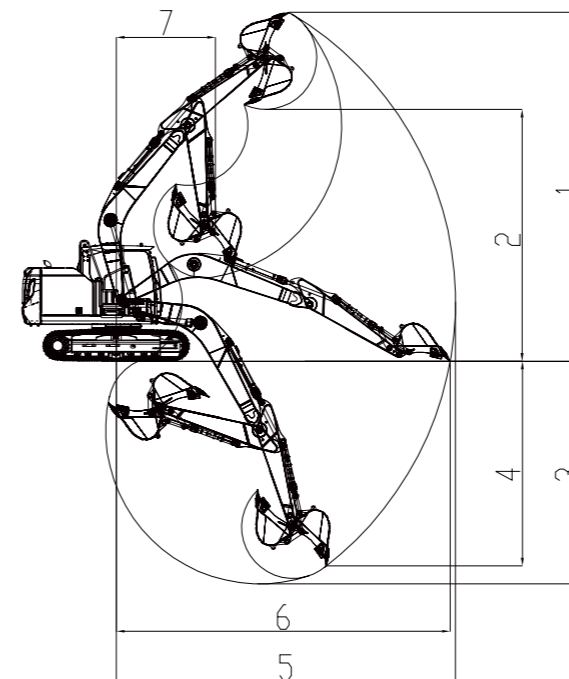


### Working Range

Max. Digging Height	1	8970mm
Max. Dumping Height	2	6585mm
Max. Digging Depth	3	5850mm
Max. Vertical Digging Depth	4	4625mm
Max. Digging Radius	5	8775mm
Max. Ground Digging Radius	6	7640mm
Min. Turning Radius	7	2395mm

### Dimensions

Shipping Length	A	7710mm
Shipping Ground Length	B	4080mm
Boom Height	C	3125mm
Shipping Width	D	2700mm
Cab Height	E	3000mm
Ground Clearance of Counter Weight	F	895mm
Min. Ground Clearance	G	425.5mm
Tail Turning Radius	H	2300mm
Wheel Tread	I	2880mm
Track Length	J	3615mm
Track Gauge	K	2000mm
Track Shoe Width	L	700mm
Hood Height	M	1940mm
Rotary Platform Width	N	2490mm



### Other Specifications

Boom Length	Long boom4600mm
Arm Length	Long arm3000mm
Track Section Number (each side)	43
Track Roller Number	7